

Product

Catalogue

2023



Keep up to date
Connect with us at LinkedIn



What We Do

Dietzel Univolt manufacture an appropriate cable management solution for any kind of electrical installation, confident of our superior quality, our features characterise the extensive product choice of conduits, trunkings and accessories.

Our Approach

LSZHFR Ltd stocks and distributes direct from the Univolt Donguan factory a wide range of cable management products, with a range of over 10,000 items Univolt produce. These items can be found on major construction sites and important building projects worldwide. Our overall annual production comprises more than 120 million meters of conduits and 60 million fittings, manufactured to the highest international standards.

Our Team

We are an independent family enterprise with a strong international orientation, each of our sales orientated staff play an important role in customer retention and company growth, all our staff are dedicated to ensuring our customers are completely satisfied with our products and services.

Mission

Our philosophy is building reliable long-term partnerships with our customers and to maintain Univolt's brand name for innovative spirit and culture first class product quality and the very highest service levels.

Principles

To attain excellent standards and continue to be a benchmark within the cable management industry To create strong relationships with our customers and suppliers.

Maintain integrity, honesty and high ethical standards. Constantly invest in innovation and develop new products and processes.

Deliver quality product and services to our customers Strive to improve every aspect of our business.

CONTENTS

| | |
|---------|--|
| 4 - 5 | A Brief Guide To Plastic Conduit and Fire Safety |
| 6 - 9 | Rigid Conduit & Accessories |
| 10 - 11 | Mini Trunking |
| 12 - 13 | Maxi Trunking |
| 14 - 15 | Starline Trunking |
| 16 - 17 | Starline SLXL Dado Trunking |
| 18 | Starline SLR 3 Comp Curved Trunking |
| 19 | Oval Conduit / Channel / Surface Boxes |
| 20 | PVC Bench Trunking |
| 21 | Aluminium Power Pole |
| 22 | Power Posts |
| 23 | Cavity Floor Boxes & Plates |
| 24 | Twin Wall Ducting |
| 25 | Flexible Conduit PVC-U |
| 26 - 27 | Flexible Conduit Contractor Packs / Enclosure Boxes/ Accessories |
| 28 - 31 | HFT - Next Generation Conduit |
| 32 - 35 | Case Studies |



"In pursuance of our policy of continued product improvement Dietzel-Univolt reserve the right to change the design or specification of its products without notification"

"Every care has been taken to ensure that the information contained in this catalogue is correct at time of going to print"

"All dimensions quoted are approximate and should be checked against the technical data sheet before installation, images are typical and not binding. All drawings, photographs/image layout & designs are considered property of Dietzel-Univolt"



A Brief Guide to Plastic Conduit and Fire Safety

Safety should be the main concern when approaching an electrical installation. Product specification - ensuring the correct solution is selected to suit the application at hand is a key element of this responsibility. This brief guide provides an overview of the product properties of different types of plastic conduit...

- PVC - Polyvinyl Chloride
- PVC LSF - Lower Smoke Fume
- LSF0H - Low Smoke Fume Zero Halogen

What is PVC?

Ideal for low risk buildings, correctly specified PVC products offer flexibility and cost advantages over LSFOH.

What is PVC/LSF?

An incremental improvement over standard PVC products, increased flame retardancy and reduced smoke output compared to standard PVC.

What is LSFOH?

Also known as LSZH, LSOH, LSFH, OHLS, ZHFR

Containing less than 0.5% halogens and minimal smoke generation, ideal for public buildings, airports, railways, commercial buildings data centres and all escape routes.

Benefits of PVC/LSF?

Lower Smoke Fume (PVC LSF) offers lower emissions than standard PVC hence PVC LSF lies somewhere between that of PVC and LSFOH.



Reduces smoke release by up to 65% in the first 4 minutes of a fire



Lower smoke - Increased flame retardancy

Benefits of LSFOH?

Low Smoke Fume Zero Halogen (LSFOH) conduits are not only characterised by the fire retardant performance but also by the halogen-free properties



Low smoke according to IEC 60134



Zero Halogen to IEC 60754-1 / 60754-2



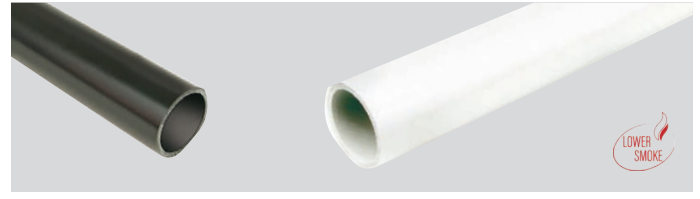
Flame retardant to IEC 61386

RIGID CONDUIT LIGHT



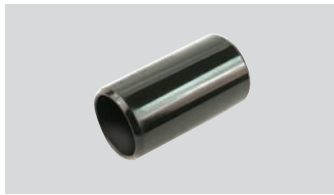
| Part No. | A-Code | Description | Pk Qty |
|------------|--------|-------------------------------|--------|
| BSSL 20 WH | 61882 | 20mm Conduit Light White (4m) | 90m |
| BSSL 25 WH | 61884 | 25mm Conduit Light White (4m) | 90m |
| BSSL 20 BK | 24912 | 20mm Conduit Light Black (4m) | 90m |
| BSSL 25 BK | 34997 | 25mm Conduit Light Black (4m) | 90m |

RIGID CONDUIT HEAVY LSF



| Part No. | A-Code | Description | Pk Qty |
|----------------|--------|-----------------------------------|--------|
| BSSH 20 WH LSF | 103718 | 20mm Conduit Heavy White LSF (4m) | 90m |
| BSSH 25 WH LSF | 103719 | 25mm Conduit Heavy White LSF (4m) | 90m |
| BSSH 20 BK LSF | 105790 | 20mm Conduit Heavy Black LSF (4m) | 90m |
| BSSH 25 BK LSF | 105791 | 25mm Conduit Heavy Black LSF (4m) | 90m |

COUPLERS BLACK

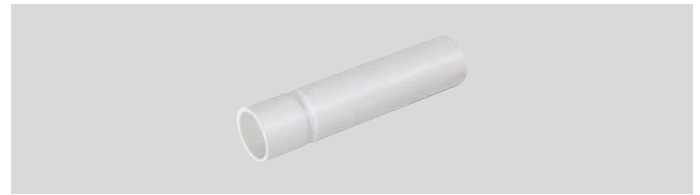


COUPLERS WHITE



| Part No. | A-Code | Description | Pk Qty |
|----------|--------|---------------------|--------|
| SM 20 BK | 20663 | 20mm Couplers Black | 100pcs |
| SM 20 WH | 20670 | 20mm Couplers White | 100pcs |
| SM 25 BK | 20664 | 25mm Couplers Black | 50pcs |
| SM 25 WH | 20671 | 25mm Couplers White | 50pcs |

EXPANSION COUPLER WHITE



| Part No. | A-Code | Description | Pk Qty |
|----------|--------|------------------------------|--------|
| EC 20 WH | 9338 | 20mm Expansion Coupler White | 50pcs |
| EC 25 WH | 9339 | 25mm Expansion Coupler White | 25pcs |

SPACER BAR SADDLES BLACK

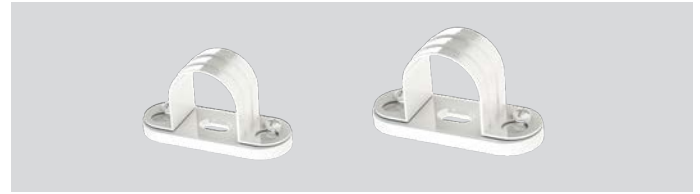


SPACER BAR SADDLES WHITE



| Part No. | A-Code | Description | Pk Qty |
|-----------|--------|-------------------------------|--------|
| SBS 20 BK | 8900 | 20mm Spacer Bar Saddles Black | 50pcs |
| SBS 20 WH | 9248 | 20mm Spacer Bar Saddles White | 50pcs |
| SBS 25 BK | 8901 | 25mm Spacer Bar Saddles Black | 50pcs |
| SBS 25 WH | 9249 | 25mm Spacer Bar Saddles White | 50pcs |

METAL COATED WHITE SPACER BAR SADDLES



| Part No. | A-Code | Description | Pk Qty |
|---------------|--------|--|--------|
| UNISB20SADDLE | 103249 | 20mm Metal Coated White Spacer Bar Saddles | 100pcs |
| UNISB25SADDLE | 103250 | 25mm Metal Coated White Spacer Bar Saddles | 100pcs |

CLIPS BLACK



CLIPS WHITE

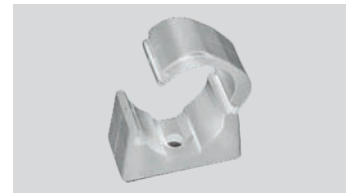


| Part No. | A-Code | Description | Pk Qty |
|----------|--------|------------------|--------|
| CL 20 BK | 82179 | 20mm Clips Black | 100pcs |
| CL 20 WH | 82180 | 20mm Clips White | 100pcs |
| CL 25 BK | 82216 | 25mm Clips Black | 100pcs |
| CL 25 WH | 82217 | 25mm Clips White | 100pcs |

NYLON KWIK CLIP BLACK



NYLON KWIK CLIP WHITE



| Part No. | A-Code | Description | Pk Qty |
|-----------|--------|----------------------------|--------|
| HKS 20 WH | 57247 | 20mm Nylon Kwik Clip White | 100pcs |
| HKS 20 BK | 57245 | 20mm Nylon Kwik Clip Black | 100pcs |
| HKS 25 WH | 57250 | 25mm Nylon Kwik Clip White | 100pcs |
| HKS 25 BK | 57248 | 25mm Nylon Kwik Clip Black | 100pcs |

FEMALE ADAPTORS BLACK



FEMALE ADAPTORS WHITE



MALE ADAPTORS BLACK



MALE ADAPTORS WHITE



| Part No. | A-Code | Description | Pk Qty |
|---------------|--------|----------------------------|--------|
| AFT/MBS 20 BK | 9086 | 20mm Female Adaptors Black | 100pcs |
| AFT/MBS 20 WH | 10184 | 20mm Female Adaptors White | 100pcs |
| AFT/MBS 25 BK | 9087 | 25mm Female Adaptors Black | 50pcs |
| AFT/MBS 25 WH | 10185 | 25mm Female Adaptors White | 50pcs |

| Part No. | A-Code | Description | Pk Qty |
|--------------|--------|--------------------------|--------|
| AMT/LR 20 BK | 9548 | 20mm Male Adaptors Black | 100pcs |
| AMT/LR 20 WH | 9600 | 20mm Male Adaptors White | 100pcs |
| AMT/LR 25 BK | 9549 | 25mm Male Adaptors Black | 50pcs |
| AMT/LR 25 WH | 9601 | 25mm Male Adaptors White | 50pcs |

NORMAL BEND BLACK



NORMAL BEND WHITE



INSPECTION BEND BLACK



INSPECTION BEND WHITE



| Part No. | A-Code | Description | Pk Qty |
|----------|--------|------------------------|--------|
| NB 20 BK | 8885 | 20mm Normal Bend Black | 25pcs |
| NB 20 WH | 9227 | 20mm Normal Bend White | 25pcs |
| NB 25 BK | 8886 | 25mm Normal Bend Black | 10pcs |
| NB 25 WH | 9228 | 25mm Normal Bend White | 10pcs |

| Part No. | A-Code | Description | Pk Qty |
|----------|--------|----------------------------|--------|
| IB 20 BK | 9095 | 20mm Inspection Bend Black | 50pcs |
| IB 20 WH | 9257 | 20mm Inspection Bend White | 50pcs |
| IB 25 BK | 9096 | 25mm Inspection Bend Black | 25pcs |
| IB 25 WH | 9258 | 25mm Inspection Bend White | 25pcs |

INSPECTION ELBOW BLACK



INSPECTION ELBOW WHITE



INSPECTION TEE BLACK



INSPECTION TEE WHITE



| Part No. | A-Code | Description | Pk Qty |
|----------|--------|-----------------------------|--------|
| IE 20 BK | 16901 | 20mm Inspection Elbow Black | 50pcs |
| IE 20 WH | 16903 | 20mm Inspection Elbow White | 50pcs |
| IE 25 BK | 16902 | 25mm Inspection Elbow Black | 20pcs |
| IE 25 WH | 16904 | 25mm Inspection Elbow White | 20pcs |

| Part No. | A-Code | Description | Pk Qty |
|----------|--------|---------------------------|--------|
| IT 20 BK | 9092 | 20mm Inspection Tee Black | 50pcs |
| IT 20 WH | 9254 | 20mm Inspection Tee White | 50pcs |
| IT 25 BK | 9093 | 25mm Inspection Tee Black | 20pcs |
| IT 25 WH | 9255 | 25mm Inspection Tee White | 20pcs |

LOCKRINGS BLACK



LOCKRINGS WHITE



LOCKNUTS BLACK



LOCKNUTS WHITE



| Part No. | A-Code | Description | Pk Qty |
|----------|--------|----------------------|--------|
| LR 20 BK | 9542 | 20mm Lockrings Black | 250pcs |
| LR 20 WH | 9594 | 20mm Lockrings White | 250pcs |
| LR 25 BK | 9543 | 25mm Lockrings Black | 200pcs |
| LR 25 WH | 9595 | 25mm Lockrings White | 200pcs |

| Part No. | A-Code | Description | Pk Qty |
|----------|--------|---------------------|--------|
| LN 20 BK | 9536 | 20mm Locknuts Black | 200pcs |
| LN 20 WH | 9588 | 20mm Locknuts White | 200pcs |
| LN 25 BK | 9537 | 25mm Locknuts Black | 100pcs |
| LN 25 WH | 9589 | 25mm Locknuts White | 100pcs |

RIGID CONDUIT & ACCESSORIES

TERMINAL BOX 1 WAY BLACK, WHITE



| Part No. | A-Code | Description | Pk Qty |
|------------|--------|-------------------------------|--------|
| CB 20/1 BK | 104251 | 20mm Terminal 1 Way Box Black | 25pcs |
| CB 20/1 WH | 104241 | 20mm Terminal 1 Way Box White | 25pcs |
| CB 25/1 BK | 104256 | 25mm Terminal 1 Way Box Black | 25pcs |
| CB 25/1 WH | 104246 | 25mm Terminal 1 Way Box White | 25pcs |

THROUGH BOX BLACK, WHITE



| Part No. | A-Code | Description | Pk Qty |
|------------|--------|------------------------------|--------|
| CB 20/2 BK | 104252 | 20mm Through 2 Way Box Black | 25pcs |
| CB 20/2 WH | 104242 | 20mm Through 2 Way Box White | 25pcs |
| CB 25/2 BK | 104257 | 25mm Through 2 Way Box Black | 25pcs |
| CB 25/2 WH | 104247 | 25mm Through 2 Way Box White | 25pcs |

ANGLE, BLACK, WHITE



| Part No. | A-Code | Description | Pk Qty |
|------------|--------|------------------|--------|
| CB 20/A BK | 104253 | 20mm Angle Black | 25pcs |
| CB 20/A WH | 104243 | 20mm Angle White | 25pcs |
| CB 25/A BK | 104258 | 25mm Angle Black | 25pcs |
| CB 25/A WH | 104248 | 25mm Angle White | 25pcs |

TEE 3 WAY BOX BLACK, WHITE



| Part No. | A-Code | Description | Pk Qty |
|------------|--------|----------------------|--------|
| CB 20/3 BK | 104254 | 20mm Tee 3 Way Black | 25pcs |
| CB 20/3 WH | 104244 | 20mm Tee 3 Way White | 25pcs |
| CB 25/3 BK | 104259 | 25mm Tee 3 Way Black | 20pcs |
| CB 25/3 WH | 104249 | 25mm Tee 3 Way White | 20pcs |

INTERSECTION 4 WAY, BLACK, WHITE



| Part No. | A-Code | Description | Pk Qty |
|------------|--------|-------------------------------|--------|
| CB 20/4 BK | 104255 | 20mm Intersection 4 Way Black | 20pcs |
| CB 20/4 WH | 104245 | 20mm Intersection 4 Way White | 20pcs |
| CB 25/4 WH | 104250 | 25mm Intersection 4 Way White | 10pcs |
| CB 25/4 BK | 104260 | 25mm Intersection 4 Way Black | 10pcs |

BRANCH 2 WAY, BLACK, WHITE - U BOX



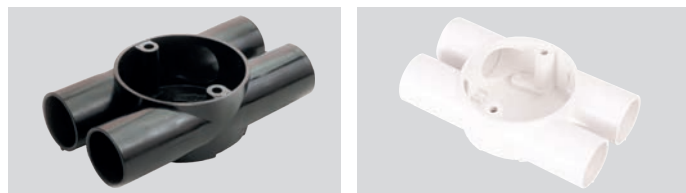
| Part No. | A-Code | Description | Pk Qty |
|--------------|--------|-------------------------|--------|
| CB 20/2-U BK | 9048 | 20mm Branch 2 Way Black | 20pcs |
| CB 20/2-U WH | 9373 | 20mm Branch 2 Way White | 20pcs |
| CB 25/2-U BK | 9050 | 25mm Branch 2 Way Black | 20pcs |
| CB 25/2-U WH | 9375 | 25mm Branch 2 Way White | 20pcs |

BRANCH 3 WAY, BLACK, WHITE - Y BOX



| Part No. | A-Code | Description | Pk Qty |
|--------------|--------|-------------------------|--------|
| CB 20/3-Y BK | 9052 | 20mm Branch 3 Way Black | 20pcs |
| CB 20/3-Y WH | 9377 | 20mm Branch 3 Way White | 20pcs |
| CB 25/3-Y BK | 9054 | 25mm Branch 3 Way Black | 20pcs |
| CB 25/3-Y WH | 9379 | 25mm Branch 3 Way White | 20pcs |

TWIN THROUGH WAY, BLACK, WHITE



| Part No. | A-Code | Description | Pk Qty |
|--------------|--------|-----------------------------|--------|
| CB 20/4-H BK | 9056 | 20mm Twin Through Way Black | 20pcs |
| CB 20/4-H WH | 9381 | 20mm Twin Through Way White | 20pcs |
| CB 25/4-H BK | 9058 | 25mm Twin Through Way Black | 20pcs |
| CB 25/4-H WH | 9383 | 25mm Twin Through Way White | 20pcs |

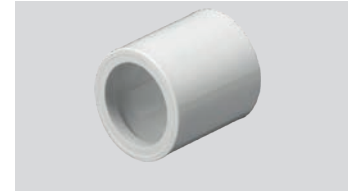
LOOP IN BOX 4 HOLE BLACK

LOOP IN BOX 4 HOLE WHITE



| Part No. | A-Code | Description | Pk Qty |
|-----------|--------|-------------------------------|--------|
| LIB 20/4W | 9311 | 20mm Loop in Box 4 Hole White | 25pcs |
| LIB 20/4B | 8978 | 20mm Loop in Box 4 Hole Black | 25pcs |

REDUCER WHITE, BLACK



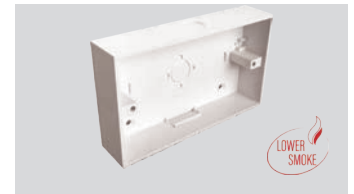
| Part No. | A-Code | Description | Pk Qty |
|------------|--------|---------------------------|--------|
| R 25x20 WH | 9321 | 25mm - 20mm Reducer White | 50pcs |
| R 25x20 BK | 8992 | 25mm - 20mm Reducer Black | 50pcs |

CIRCULAR LIDS (LIP) BLACK /WHITE



| Part No. | A-Code | Description | Pk Qty |
|--------------|--------|--------------------------------------|--------|
| CBL 16-25 BK | 8980 | 16-25mm Circular Lids Black | 100pcs |
| CBL 16-25 WH | 9314 | 16-25mm Circular Lids White | 100pcs |
| CPL 16-25 WH | 35474 | 16-25mm Circular Lids with Lip White | 100pcs |
| CPL 16-25 BK | 35473 | 16-25mm Circular Lids with Lip Black | 100pcs |

SURFACE BOXES



| Part No. | A-Code | Description | Pk Qty |
|-------------|--------|-----------------------|--------|
| SHB 20/1 WH | 25524 | 87x87x35 Surface Box | 15pcs |
| SHB 20/2 WH | 34347 | 87x147x32 Surface Box | 10pcs |

MALE BUSH SCREWED BLACK

MALE BUSH SCREWED WHITE



| Part No. | A-Code | Description | Pk Qty |
|-----------|--------|------------------------------|--------|
| MBS 20 BK | 9080 | 20mm Male Bush Screwed Black | 200pcs |
| MBS 20 WH | 10190 | 20mm Male Bush Screwed White | 200pcs |
| MBS 25 BK | 9081 | 25mm Male Bush Screwed Black | 100pcs |
| MBS 25 WH | 10191 | 25mm Male Bush Screwed White | 100pcs |

CONDUIT BENDING BLOCK



| Part No. | A-Code | Description | Pk Qty |
|----------|--------|-----------------------|--------|
| GP 23-36 | 938 | Conduit Bending Block | 1pc |

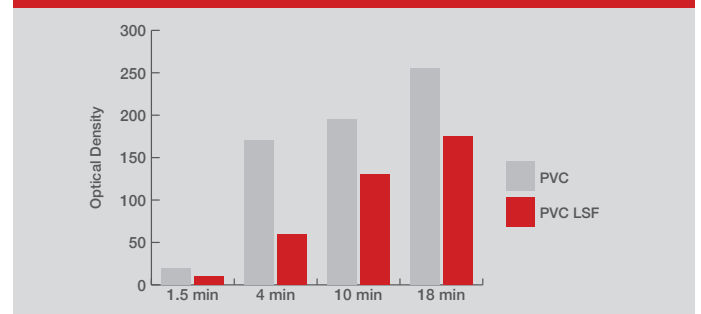
BENDING SPRING H/G

BENDING SPRING L/G



| Part No. | A-Code | Description | Pk Qty |
|-----------|--------|-------------------------------|--------|
| BSL 20 | 9135 | 20mm Bending Spring L/G | 1pc |
| BSL 25 | 9136 | 25mm Bending Spring L/G | 1pc |
| BS 20-LSF | 8912 | 20mm Bending Spring H/G - LSF | 1pc |
| BS25-LSF | 8913 | 25mm Bending Spring H/G - LSF | 1pc |

Smoke Release - Standard PVC vs PVC/LSF*



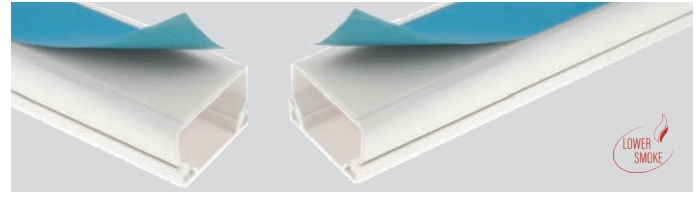
* All figures refer to standardised test samples and are given to our best knowledge but without further commitment. It is Univolt's belief that information set forth in this Data Sheet is accurate, Univolt makes no warranty, expressed or implied, with respect thereto and disclaims any liability from reliance thereon. All data are subject to change without prior notice.

MINI TRUNKING



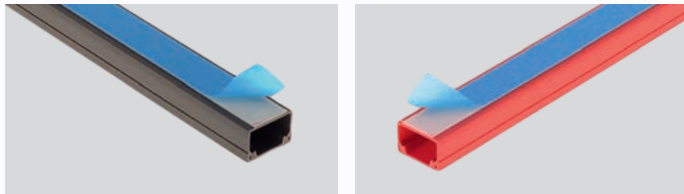
| Part No. | A-Code | Description | Pk Qty |
|-------------|--------|--------------------------------|--------|
| MIK 10/16 | 106601 | 10x16 Mini Trunking 3m | 60m |
| MIK 16/16 | 106602 | 16/16 Mini Trunking 3m | 60m |
| MIK 16/25 | 106603 | 16/25 Mini Trunking 3m | 60m |
| MIK 16/40 | 106604 | 16/40 Mini Trunking 3m | 60m |
| MIK 25/40 | 106605 | 25/40 Mini Trunking 3m | 30m |
| MIK 25/40/2 | 106606 | 25/40 Mini Trunking 2 Comp, 3m | 30m |
| MIK 40/40 | 106607 | 40/40 Mini Trunking 3m | 30m |
| MIK 40/60 | 106608 | 40/60 Mini Trunking 3m | 30m |

SELF ADHESIVE MINI TRUNKING



| Part No. | A-Code | Description | Pk Qty |
|----------|--------|--|--------|
| MIKA 0 | 106609 | 10/16 Self Adhesive Mini Trunking 3m | 60m |
| MIKA 1 | 106610 | 16/16 Self Adhesive Mini Trunking 3m | 60m |
| MIKA 2 | 106611 | 16/25 Self Adhesive Mini Trunking 3m Now in PVC/LSF | 60m |
| MIKA 3 | 106612 | 16/40 Self Adhesive Mini Trunking 3m | 60m |
| MIKA 4 | 106613 | 25/40 Self Adhesive Mini Trunking 3m Now in PVC/LSF | 30m |
| MIKA 5 | 106614 | 40/40 Self Adhesive Mini Trunking 3m | 30m |

COLOURED TRUNKING

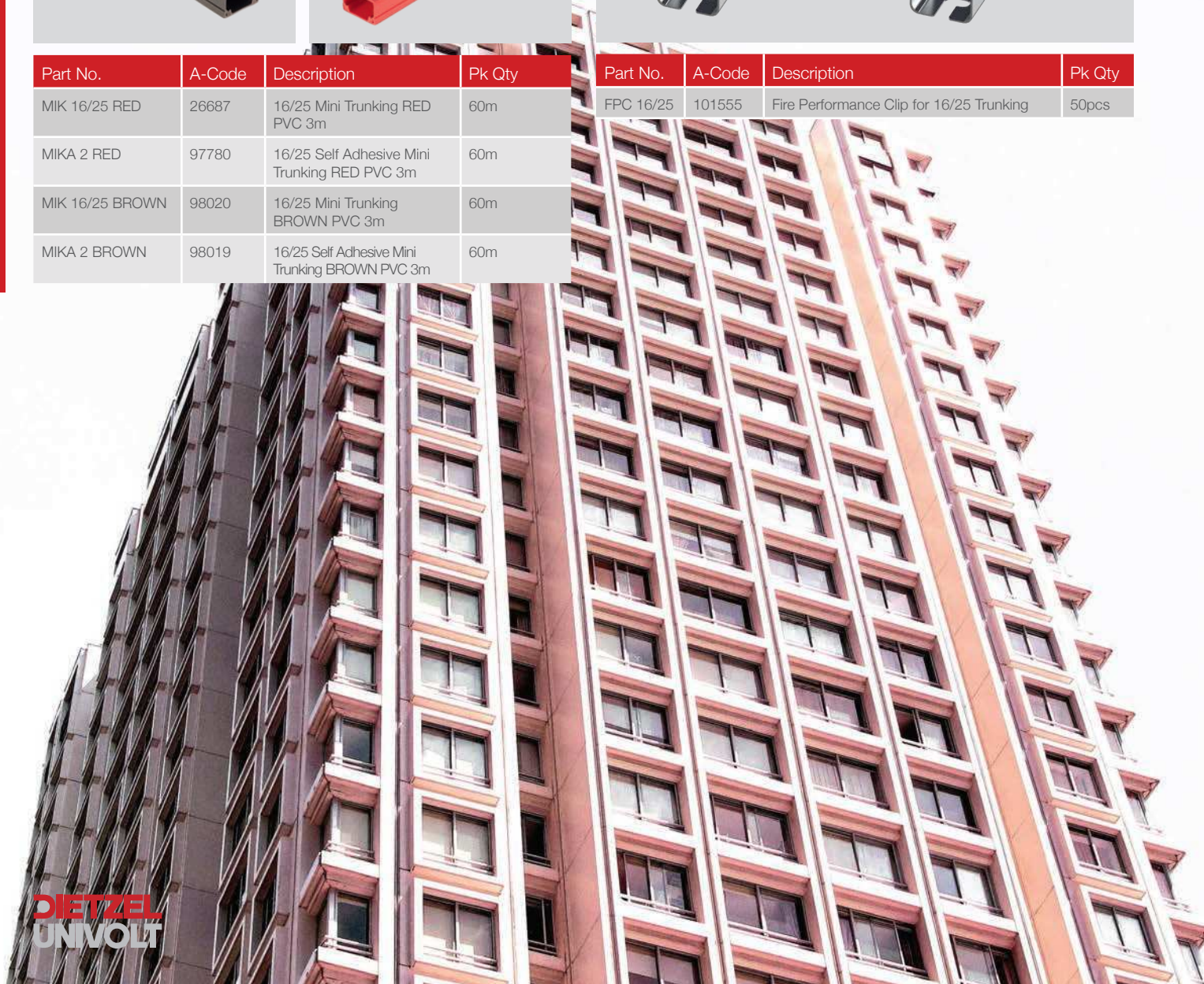


| Part No. | A-Code | Description | Pk Qty |
|-----------------|--------|--|--------|
| MIK 16/25 RED | 26687 | 16/25 Mini Trunking RED PVC 3m | 60m |
| MIKA 2 RED | 97780 | 16/25 Self Adhesive Mini Trunking RED PVC 3m | 60m |
| MIK 16/25 BROWN | 98020 | 16/25 Mini Trunking BROWN PVC 3m | 60m |
| MIKA 2 BROWN | 98019 | 16/25 Self Adhesive Mini Trunking BROWN PVC 3m | 60m |

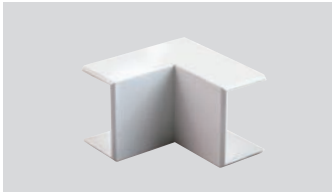
FIRE PERFORMANCE CLIP



| Part No. | A-Code | Description | Pk Qty |
|-----------|--------|--|--------|
| FPC 16/25 | 101555 | Fire Performance Clip for 16/25 Trunking | 50pcs |



INTERNAL ANGLE

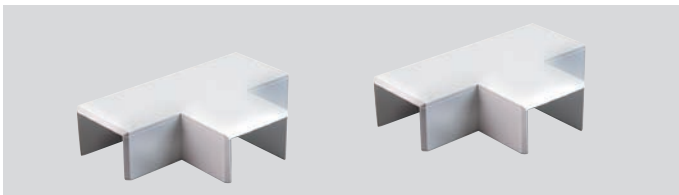


EXTERNAL ANGLE



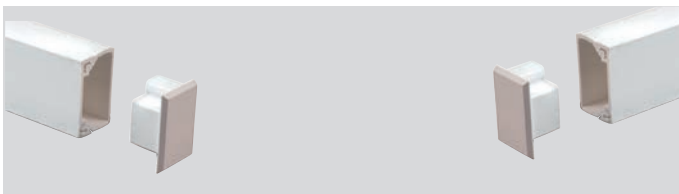
| Part No. | A-Code | Description | Pk Qty |
|-----------|--------|-----------------------|--------|
| SIE 16/16 | 4966 | 16/16 Internal Angles | 20pcs |
| SIE 16/25 | 4967 | 16/25 Internal Angles | 10pcs |
| SIE 16/40 | 4969 | 16/40 Internal Angles | 10pcs |
| SIE 25/40 | 4970 | 25/40 Internal Angles | 10pcs |
| SIE 40/40 | 23005 | 40/40 Internal Angles | 10pcs |
| SIE 40/60 | 23613 | 40/60 Internal Angles | 1pc |
| SAE 16/16 | 4961 | 16/16 External Angles | 20pcs |
| SAE 16/25 | 4964 | 16/25 External Angles | 10pcs |
| SAE 16/40 | 4962 | 16/40 External Angles | 10pcs |
| SAE 25/40 | 4963 | 25/40 External Angles | 10pcs |
| SAE 40/40 | 23004 | 40/40 External Angles | 10pcs |
| SAE 40/60 | 23614 | 40/60 External Angles | 1pc |

TEE



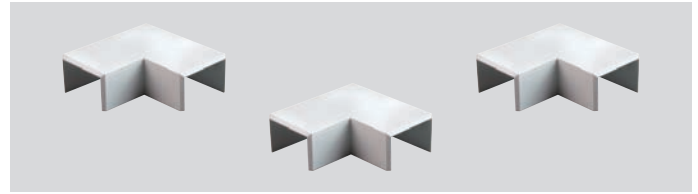
| Part No. | A-Code | Description | Pk Qty |
|----------|--------|-------------|--------|
| ST 16/16 | 4971 | 16/16 Tee | 10pcs |
| ST 16/25 | 4974 | 16/25 Tee | 10pcs |
| ST 16/40 | 4972 | 16/40 Tee | 20pcs |
| ST 25/40 | 4973 | 25/40 Tee | 5pcs |
| ST 40/40 | 23006 | 40/40 Tee | 5pcs |
| ST 40/60 | 23611 | 40/60 Tee | 1pc |

STOP ENDS



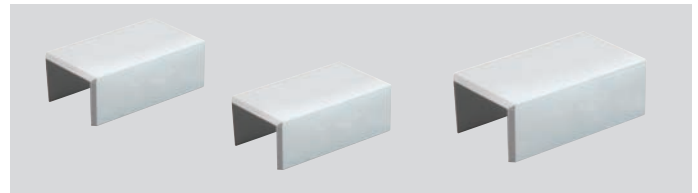
| Part No. | A-Code | Description | Pk Qty |
|----------|--------|-----------------|--------|
| SE 16/16 | 4977 | 16/16 Stop Ends | 50pcs |
| SE 16/25 | 4978 | 16/25 Stop Ends | 50pcs |
| SE 16/40 | 4979 | 16/40 Stop Ends | 20pcs |
| SE 25/40 | 4980 | 25/40 Stop Ends | 20pcs |
| SE 40/40 | 4981 | 40/40 Stop Ends | 20pcs |
| SE 40/60 | 25613 | 40/60 Stop Ends | 10pcs |

FLAT ANGLE



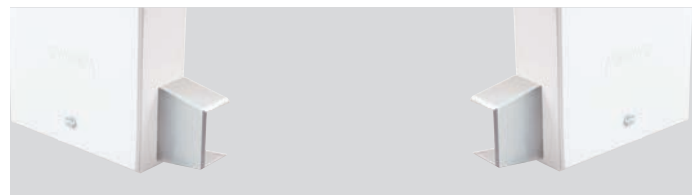
| Part No. | A-Code | Description | Pk Qty |
|-----------|--------|-------------------|--------|
| SFW 16/16 | 4956 | 16/16 Flat Angles | 20pcs |
| SFW 16/25 | 4957 | 16/25 Flat Angles | 10pcs |
| SFW 16/40 | 4958 | 16/40 Flat Angles | 10pcs |
| SFW 25/40 | 4959 | 25/40 Flat Angles | 10pcs |
| SFW 40/40 | 23003 | 40/40 Flat Angles | 5pcs |
| SFW 40/60 | 23612 | 40/60 Flat Angles | 1pc |

COUPLERS



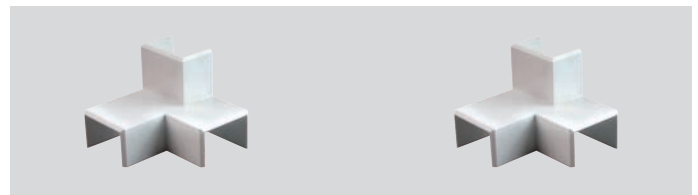
| Part No. | A-Code | Description | Pk Qty |
|----------|--------|----------------|--------|
| SK 16/16 | 4951 | 16/16 Couplers | 20pcs |
| SK 16/25 | 4952 | 16/25 Couplers | 20pcs |
| SK 16/40 | 4953 | 16/40 Couplers | 20pcs |
| SK 25/40 | 4954 | 25/40 Couplers | 20pcs |
| SK 40/40 | 4955 | 40/40 Couplers | 10pcs |
| SK 40/60 | 25614 | 40/60 Couplers | 5pcs |

TRUNKING ADAPTER



| Part No. | A-Code | Description | Pk Qty |
|-----------|--------|------------------------|--------|
| SKE 16/16 | 4986 | 16x16 Trunking Adaptor | 1pc |
| SKE 16/25 | 4987 | 16x25 Trunking Adaptor | 1pc |

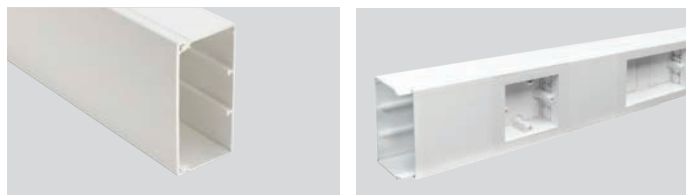
INTERSECTIONS



| Part No. | A-Code | Description | Pk Qty |
|------------|--------|--------------------------|--------|
| SWAL 16/25 | 4982 | 16/25 Left Intersection | 50pcs |
| SWAR 16/25 | 4983 | 16/25 Right Intersection | 50pcs |
| SA 16/25 | 4984 | 16/25 Side Tee | 50pcs |

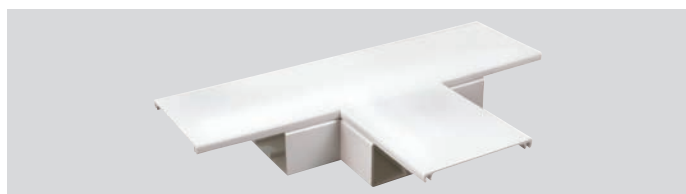
MAXI TRUNKING

TRUNKING



| Part No. | A-Code | Description | Pk Qty |
|-------------|--------|-----------------------|--------|
| MAK 50/50 | 36996 | 50/50 Maxi Trunking | 12m |
| MAK 50/75 | 19007 | 50/75 Maxi Trunking | 12m |
| MAK 50/100 | 36997 | 50/100 Maxi Trunking | 12m |
| MAK 50/150 | 22788 | 50/150 Maxi Trunking | 6m |
| MAK 75/75 | 19008 | 75/75 Maxi Trunking | 12m |
| MAK 75/100 | 19010 | 75/100 Maxi Trunking | 6m |
| MAK 75/150 | 22953 | 75/150 Maxi Trunking | 6m |
| MAK 100/100 | 19011 | 100/100 Maxi Trunking | 6m |
| MAK 100/150 | 22789 | 100/150 Maxi Trunking | 3m |
| MAK 150/150 | 22790 | 150/150 Maxi Trunking | 3m |

FLAT TEE



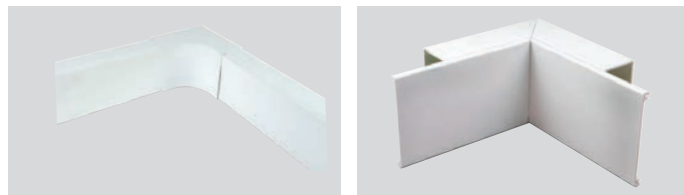
| Part No. | A-Code | Description | Pk Qty |
|-------------|--------|------------------|--------|
| MFT 50/50 | 19274 | 50x50 Flat Tee | 1pc |
| MFT 50/75 | 19275 | 50x75 Flat Tee | 1pc |
| MFT 50/100 | 19276 | 50x100 Flat Tee | 1pc |
| MFT 50/150 | 22970 | 50x150 Flat Tee | 1pc |
| MFT 75/75 | 19277 | 75x75 Flat Tee | 1pc |
| MFT 75/100 | 19278 | 75x100 Flat Tee | 1pc |
| MFT 75/150 | 22971 | 75x150 Flat Tee | 1pc |
| MFT 100/100 | 19279 | 100x100 Flat Tee | 1pc |
| MFT 100/150 | 22972 | 100x150 Flat Tee | 1pc |
| MFT 150/150 | 22973 | 150x150 Flat Tee | 1pc |

INTERNAL COUPLER



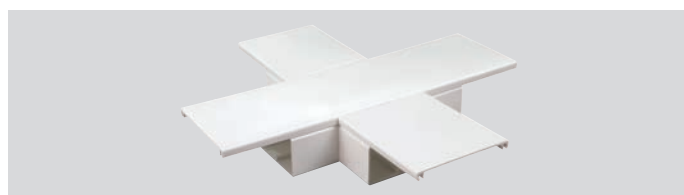
| Part No. | A-Code | Description | Pk Qty |
|----------|--------|------------------------|--------|
| MIC 50 | 37544 | 50mm Internal Coupler | 1pc |
| MIC 75 | 37545 | 75mm Internal Coupler | 1pc |
| MIC 100 | 37543 | 100mm Internal Coupler | 1pc |
| MIC 150 | 37542 | 150mm Internal Coupler | 1pc |

INTERNAL ANGLES



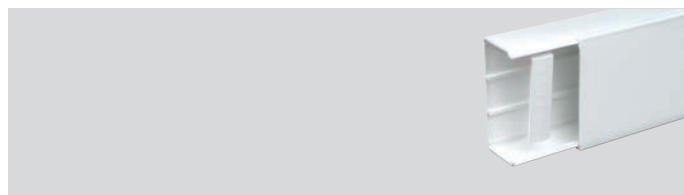
| Part No. | A-Code | Description | Pk Qty |
|-------------|--------|--|--------|
| MIE 50/50 | 19250 | 50x50 Internal Angles | 1pc |
| MIES 50/50 | 85632 | 50x50 Internal Angles - INJECTION MOULDED | 1pc |
| MIE 50/75 | 19251 | 50x75 Internal Angles | 1pc |
| MIE 50/100 | 19252 | 50x100 Internal Angles | 1pc |
| MIES 50/100 | 86043 | 50x100 Internal Angles - INJECTION MOULDED | 1pc |
| MIE 50/150 | 22958 | 50x150 Internal Angles | 1pc |
| MIE 75/75 | 19253 | 75x75 Internal Angles | 1pc |
| MIE 75/100 | 19254 | 75x100 Internal Angles | 1pc |
| MIE 75/150 | 22959 | 75x150 Internal Angles | 1pc |
| MIE 100/100 | 19255 | 100x100 Internal Angles | 1pc |
| MIE 100/150 | 22960 | 100x150 Internal Angles | 1pc |
| MIE 150/150 | 22961 | 150x150 Internal Angles | 1pc |

CROSS PIECE



| Part No. | A-Code | Description | Pk Qty |
|-------------|--------|---------------------|--------|
| MCP 50/50 | 25885 | 50x50 Cross Piece | 1pc |
| MCP 50/100 | 25887 | 50x100 Cross Piece | 1pc |
| MCP 50/150 | 25888 | 50x150 Cross Piece | 1pc |
| MCP 75/75 | 25889 | 75x75 Cross Piece | 1pc |
| MCP 75/100 | 25890 | 75x100 Cross Piece | 1pc |
| MCP 75/150 | 25891 | 75x150 Cross Piece | 1pc |
| MCP 100/100 | 25892 | 100x100 Cross Piece | 1pc |
| MCP 100/150 | 25893 | 100x150 Cross Piece | 1pc |
| MCP 150/150 | 25215 | 150x150 Cross Piece | 1pc |

CABLE RETAINER



| Part No. | A-Code | Description | Pk Qty |
|----------|--------|----------------------|--------|
| MHK 50 | 19329 | 50mm Cable Retainer | 1pc |
| MHK 75 | 19330 | 75mm Cable Retainer | 1pc |
| MHK 100 | 19331 | 100mm Cable Retainer | 1pc |

EXTERNAL ANGLES



| Part No. | A-Code | Description | Pk Qty |
|-------------|--------|---|--------|
| MAE 50/50 | 19262 | 50x50 External Angle | 1pc |
| MAES 50/50 | 85634 | 50x50 External Angle - INJECTION MOULDED | 1pc |
| MAE 50/75 | 19263 | 50x75 External Angle | 1pc |
| MAE 50/100 | 19264 | 50x100 External Angle | 1pc |
| MAES 50/100 | 86042 | 50x100 External Angle - INJECTION MOULDED | 1pc |
| MAE 50/150 | 22962 | 50x150 External Angle | 1pc |
| MAE 75/75 | 19265 | 75x75 External Angle | 1pc |
| MAE 75/100 | 19266 | 75x100 External Angle | 1pc |
| MAE 75/150 | 22963 | 75x150 External Angle | 1pc |
| MAE 100/100 | 19267 | 100x100 External Angle | 1pc |
| MAE 100/150 | 22964 | 100x150 External Angle | 1pc |
| MAE 150/150 | 22965 | 150x150 External Angle | 1pc |

STOP END



| Part No. | A-Code | Description | Pk Qty |
|------------|--------|------------------|--------|
| ME 50/50 | 19308 | 50x50 Stop End | 1pc |
| ME 50/75 | 19309 | 50x75 Stop End | 1pc |
| ME 50/100 | 19310 | 50x100 Stop End | 1pc |
| ME 50/150 | 22163 | 50x150 Stop End | 1pc |
| ME 75/75 | 19311 | 75x75 Stop End | 1pc |
| ME 75/100 | 19312 | 75x100 Stop End | 1pc |
| ME 75/150 | 22165 | 75x150 Stop End | 1pc |
| ME 100/100 | 19313 | 100x100 Stop End | 1pc |
| ME 100/150 | 22167 | 100x150 Stop End | 1pc |
| ME 150/150 | 22169 | 150x150 Stop End | 1pc |

SINGLE SOCKET

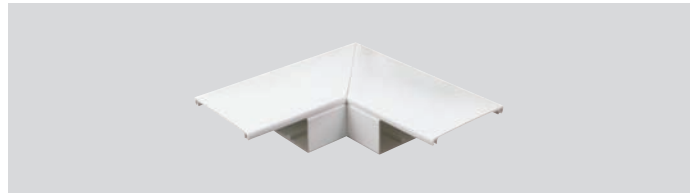


TWIN SOCKET



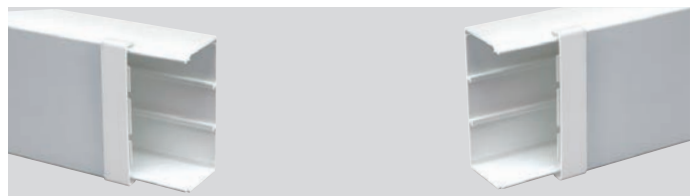
| Part No. | A-Code | Description | Pk Qty |
|------------------|--------|-------------------------------|--------|
| MIB60/100 Single | 23230 | Single Socket Box 80x100x28mm | 1pc |
| MIB120/100 Twin | 23232 | Twin Socket Box 140x100x28mm | 1pc |
| MIB60/150 Single | 23231 | Single Socket Box 80x150x28mm | 1pc |
| MIB120/150 Twin | 23233 | Twin Socket Box 140x150x28mm | 1pc |

FLAT ANGLE



| Part No. | A-Code | Description | Pk Qty |
|------------|--------|--------------------|--------|
| MFW50/50 | 19286 | 50x50 Flat Angle | 1pc |
| MFW50/75 | 19287 | 50x75 Flat Angle | 1pc |
| MFW50/100 | 19288 | 50x100 Flat Angle | 1pc |
| MFW50/150 | 22966 | 50x150 Flat Angle | 1pc |
| MFW75/75 | 19289 | 75x75 Flat Angle | 1pc |
| MFW75/100 | 19290 | 75x100 Flat Angle | 1pc |
| MFW75/150 | 22967 | 75x150 Flat Angle | 1pc |
| MFW100/100 | 19291 | 100x100 Flat Angle | 1pc |
| MFW100/150 | 22968 | 100x150 Flat Angle | 1pc |
| MFW150/150 | 22969 | 150x150 Flat Angle | 1pc |

COVER JOINT



| Part No. | A-Code | Description | Pk Qty |
|----------|--------|-------------------|--------|
| MK50WS | 19317 | 50mm Cover Joint | 1pc |
| MK75WS | 19318 | 75mm Cover Joint | 1pc |
| MK100WS | 19319 | 100mm Cover Joint | 1pc |
| MK150WS | 25055 | 150mm Cover Joint | 1pc |

TRUNKING DIVIDER



| Part No. | A-Code | Description | Pk Qty |
|----------|--------|------------------------|--------|
| MTW 50 | 19717 | 50mm Trunking Divider | 3m |
| MTW 75 | 19718 | 75mm Trunking Divider | 3m |
| MTW 100 | 19719 | 100mm Trunking Divider | 3m |



MAK50/100 can be installed as a dado trunking for both power and data cables

MAK50/100 is compatible with MIB60/100 Single Backbox and MIB120/100 Twin Backbox.

STARLINE TRUNKING

TRUNKING 50 X 170



| Part No. | A-Code | Description | Pk Qty |
|------------|--------|-------------------------|--------|
| SLC 50/170 | 82756 | Dado Trunking Chamfered | 3m |
| SLQ 50/170 | 82754 | Dado Trunking Square | 3m |
| SLS 50/170 | 82755 | Skirting Trunking | 3m |

| Part No. | A-Code | Description | Pk Qty |
|------------|--------|---------------------------|--------|
| SLC 50/250 | 86047 | Dado Chamfered Trunking | 3m |
| SLQ 50/250 | 86048 | Dado Square Trunking | 3m |
| SLS 50/250 | 86045 | Skirting Trunking | 3m |
| SLC 42/50 | 81971 | Chamfered Lid Only (4x3m) | 12m |
| SLQ 42/50 | 81972 | Square Lid Only (4x3m) | 12m |

INTERNAL ANGLE & FABRICATED BENDS



EXTERNAL ANGLES AND BENDS



| Part No. | A-Code | Description | Pk Qty |
|------------|--------|-------------------------------|--------|
| SIE 50/170 | 36057 | Internal Angle Skirting | 1pc |
| CIE 50/170 | 36066 | Internal Angle Dado Chamfered | 1pc |
| QIE 50/170 | 36070 | Internal Angle Dado Square | 1pc |

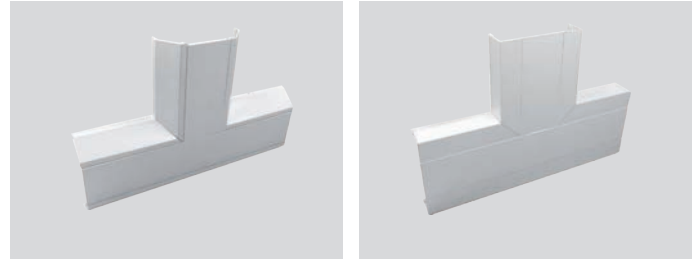
| Part No. | A-Code | Description | Pk Qty |
|------------|--------|------------------------------|--------|
| SAE 50/170 | 36058 | External Bend Skirting | 1pc |
| CAE 50/170 | 36067 | External Bend Dado Chamfered | 1pc |
| QAE 50/170 | 36071 | External Angles Dado Square | 1pc |

FLAT ANGLES



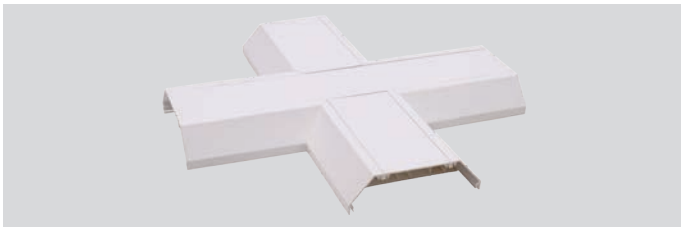
| Part No. | A-Code | Description | Pk Qty |
|-------------|--------|-----------------------------|--------|
| CFW 50/170 | 36729 | Flat Angles Dado Chamfered | 1pc |
| QFW 50/170 | 36898 | Flat Angles Dado Square | 1pc |
| SFWU 50/170 | 36730 | Flat Bend Upward Skirting | 1pc |
| SFWD 50/170 | 36731 | Flat Bend Downward Skirting | 1pc |

FLAT TEES



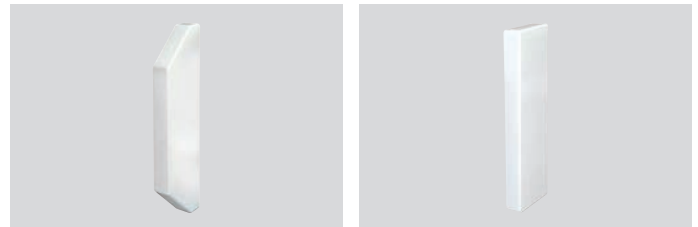
| Part No. | A-Code | Description | Pk Qty |
|-------------|--------|----------------------------|--------|
| CFT 50/170 | 36783 | Flat Tees Dado Chamfered | 1pc |
| QFT 50/170 | 36784 | Flat Tees Dado Square | 1pc |
| SFTU 50/170 | 36781 | Flat Tee Upward Skirting | 1pc |
| SFTD 50/170 | 36782 | Flat Tee Downward Skirting | 1pc |

4 WAY INTERSECTION



| Part No. | A-Code | Description | Pk Qty |
|------------|--------|------------------------------|--------|
| CFX 50/170 | 82392 | 4 Way Intersection Chamfered | 1pc |
| QFX 50/170 | 84414 | 4 Way Intersection Square | 1pc |

END CAPS AND STOPS



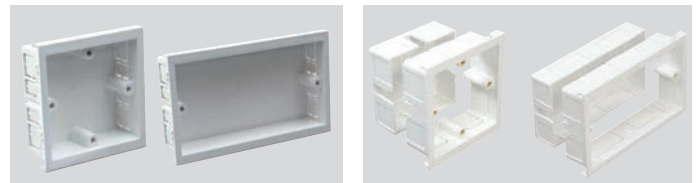
| Part No. | A-Code | Description | Pk Qty |
|------------|--------|-----------------------------|--------|
| CE 50/170 | 36069 | End Cap Dado Chamfered | 1pc |
| QE 50/170 | 36073 | End Cap Dado Square | 1pc |
| SEL 50/170 | 36060 | Left Hand End Cap Skirting | 1pc |
| SER 50/170 | 36061 | Right Hand End Cap Skirting | 1pc |

COUPLERS



| Part No. | A-Code | Description | Pk Qty |
|-----------|--------|------------------------|--------|
| SK 50/170 | 36059 | Coupler Skirting | 1pc |
| CK 50/170 | 36068 | Coupler Dado Chamfered | 1pc |
| QK 50/170 | 36072 | Coupler Dado Square | 1pc |

BACK BOXES



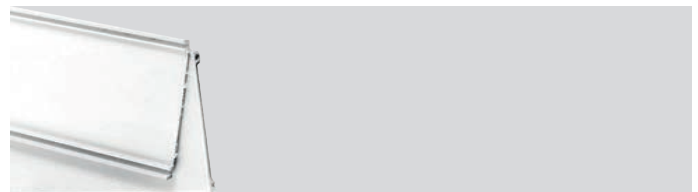
| Part No. | A-Code | Description | Pk Qty |
|----------|--------|---------------------------------|--------|
| SLB 1 | 36075 | Fixed Single Socket Box | 1pc |
| SLB 2 | 36076 | Fixed Twin Socket Box | 1pc |
| SLB1-A | 104560 | Adjustable Single box 30mm-50mm | 1pc |
| SLB2-A | 104561 | Adjustable Twin box 30mm-50mm | 1pc |

HOUSING UNIT



| Part No. | A-Code | Description | Pk Qty |
|------------|--------|--|--------|
| MRE 50/170 | 40212 | MCB/RCD Housing Unit - Complete with Din Mounting Rail | 1pc |

LIDS



| Part No. | A-Code | Description | Pk Qty |
|-----------|--------|---------------------------|--------|
| SLC 42/50 | 81971 | Chamfered Lid Only (4x3m) | 12m |
| SLQ 42/50 | 81972 | Square Lid Only (4x3m) | 12m |
| SL 80 | 82106 | Centre Lid Only (2x3m) | 6m |

NEW STARLINE SLXL PVC LSF - 3 COMP DADO

Univolt is proud to introduce and launch the latest 3 compartment curved Dado trunking into the market. The new Starline – SLXL PVC LSF has been designed for use in both power and the latest structured cabling including CAT5e, CAT6, CAT6A, CAT7, OM3 Fibre and the new CAT8 high density data solution.

At 210mm x 65mm, the SLXL PVC LSF is one of the largest 3 compartment Dado on the market, allowing for extra data capacity where a considerable amount of data is required, and was designed for various market sectors including; education, health, MOD and data centres as well as commercial and industrial applications.

Univolt SLXL PVC LSF achieves DDA compliance (Disability Discrimination Act 2005), through the use of a light grey coloured center lid.

The high impact resistance uPVC assures the trunking is both sturdy and robust, whilst providing an aesthetically pure white finish.

KEY DESIGN FEATURES

Size 210mm x 65mm (allowing for greater data capacity).

SLXL PVC - LSF (Lower smoke and fume) Reduces smoke release by up to 65% in the first 4 minutes of a fire

Will accept the latest structured cabling solutions – CAT5e, CAT6, CAT6A, CAT7, CAT8 and OM3 Fibre.

New adjustable back box (30mm – 50mm), for deeper RJ45 outlets.

Adjustable Internal and External bends +/- 5 degrees, for non-standard 90 degree walls.

Moulded internal, external, flat angle and flat Tee offer a minimum bend radius of 70mm (meeting and exceeding British, European and International standards).

Integral built in couplers on the flat angle and flat tee, negating the use for extra joint covers.

Steel screen divider for power and data separation (BS50174-2).

DDA compliance with light grey center lid.

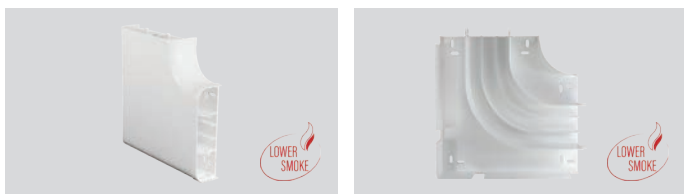


SLXL 65 X 210



| Part No. | A-Code | Description | Pk Qty |
|--------------------|--------|---|--------|
| SLXL65/210 LSF | 104553 | 210x65 lower Smoke curved 3 comp dado Cat5e/6/6A/7/8 & OM3 Fibre | 3m |
| SLXL65/210 LSF-LGL | 106745 | 210x65 lower Smoke curved 3 comp dado -Light Grey center Lid for DDA compliance | 3m |

FLAT ANGLE



| Part No. | A-Code | Description | Pk Qty |
|----------|--------|-------------------------|--------|
| SLFA LSF | 104557 | Flat Angle -lower smoke | 1pc |

COUPLERS



| Part No. | A-Code | Description | Pk Qty |
|----------|--------|-------------------------|--------|
| SLC LSF | 104554 | Joint Cover-lower smoke | 1pc |
| SLE LSF | 104555 | End Cap- lower smoke | 1pc |

END CAPS



SLXL ADJUSTABLE BACK BOXES 1G / 2G



| Part No. | A-Code | Description | Pk Qty |
|------------|--------|---|--------|
| SLB1-A LSF | 104560 | Single Adjustable box 30mm-50mm-lower smoke | 1pc |
| SLB2-A LSF | 104561 | Twin Adjustable box 30mm-50mm-lower smoke | 1pc |

INTERNAL ANGLE



| Part No. | A-Code | Description | Pk Qty |
|----------|--------|---------------------------------------|--------|
| SLIA LSF | 104556 | Internal Adjustable Angle-lower smoke | 1pc |
| SLOA LSF | 104559 | External Adjustable Angle-lower smoke | 1pc |

EXTERNAL ANGLE



FLAT TEE



| Part No. | A-Code | Description | Pk Qty |
|----------|--------|---------------|--------|
| SLFT LSF | 104562 | Flat Tee SLXL | 1pc |

CONDUIT/MINI ADAPTOR



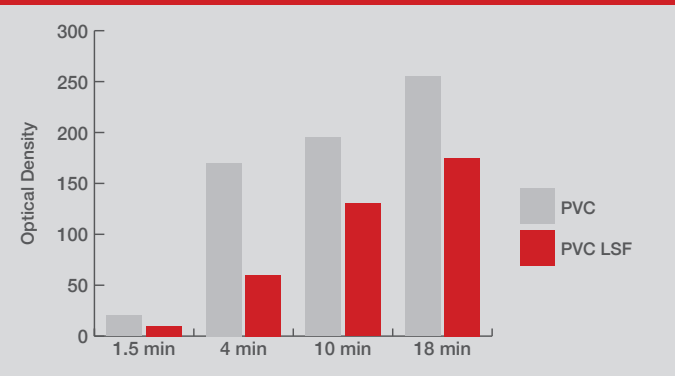
| Part No. | A-Code | Description | Pk Qty |
|----------|--------|-----------------------------------|--------|
| SLA LSF | 104558 | Conduit/Mini Adaptor- lower smoke | 1pc |

CABLE RETAINER



| Part No. | A-Code | Description | Pk Qty |
|----------|--------|----------------------------|--------|
| SLCR LSF | 104563 | Cable Retainer lower smoke | 1pc |

Smoke Release - Standard PVC vs PVC/LSF*



* All figures refer to standardised test samples and are given to our best knowledge but without further commitment. It is Univolt's belief that information set forth in this Data Sheet is accurate, Univolt makes no warranty, expressed or implied, with respect thereto and disclaims any liability from reliance thereon. All data are subject to change without prior notice.



NEW STARLINE SLR 3 COMP CURVED TRUNKING

Univolt's SLR - 3 compartment dado trunking is ideal for both power and data cabling and designed to suit any application. At 170mmx50mm the new curved profile offers greater data capacity, for the latest structured cabling* as well as DDA compliance with a light grey centre lid.

TRUNKING 50 X 170



| Part No. | A-Code | Description | Pk Qty |
|------------|--------|------------------------------|--------|
| SLR 50/170 | 101124 | Dado Trunking Curved Profile | 3m |



| Part No. | A-Code | Description | Pk Qty |
|--------------|--------|--|--------|
| SLR 50/170LG | 105311 | Dado Trunking Curved Profile c/w Light Grey Lid to meet DDA compliance | 3m |

INTERNAL ANGLE & FABRICATED BENDS



| Part No. | A-Code | Description | Pk Qty |
|------------|--------|-------------------------------|--------|
| RIE 50/170 | 103178 | Internal Angle Dado Rounded * | 1pc |

EXTERNAL ANGLES AND BENDS



| Part No. | A-Code | Description | Pk Qty |
|------------|--------|--------------------------|--------|
| RAE 50/170 | 103179 | External Angle Rounded * | 1pc |

COUPLERS



| Part No. | A-Code | Description | Pk Qty |
|-----------|--------|----------------------|--------|
| RK 50/170 | 101590 | Coupler Dado Rounded | 1pc |

END CAPS AND STOPS



| Part No. | A-Code | Description | Pk Qty |
|-----------|--------|----------------------|--------|
| RE 50/170 | 101120 | End Cap Dado Rounded | 1pc |

FLAT ANGLES



| Part No. | A-Code | Description | Pk Qty |
|------------|--------|---------------------------|--------|
| RFW 50/170 | 101122 | Flat Angle Dado Rounded * | 1pc |

FLAT TEES



| Part No. | A-Code | Description | Pk Qty |
|------------|--------|-------------------------|--------|
| RFT 50/170 | 101121 | Flat Tee Dado Rounded * | 1pc |

* Bend radius in accordance with the structure cabling manufacturer of 4x diameter of cable.

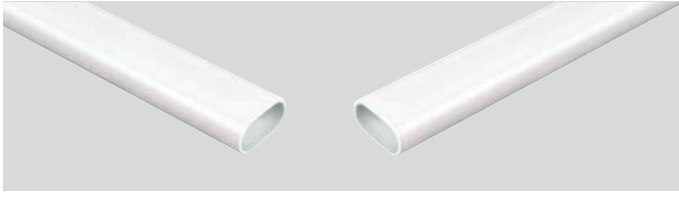
ADJUSTABLE BACK BOXES 1G / 2G



| Part No. | A-Code | Description | Pk Qty |
|----------|--------|--------------------------------------|--------|
| SLB1-A | 104560 | Single Adjustable Back Box 30mm-50mm | 1pc |
| SLB2-A | 104561 | Twin Adjustable Back Box 30mm-50mm | 1pc |

OVAL CONDUIT / CHANNEL / SURFACE BOXES

OVAL CONDUIT



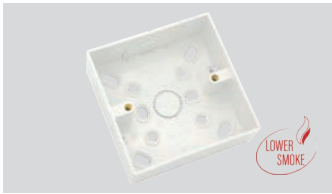
| Part No. | A-Code | Description | Pk Qty |
|----------|--------|-------------------------|--------|
| UFR 16 | 2383 | 16mm Oval Conduit White | 150m |
| UFR 20 | 103720 | 20mm Oval Conduit White | 150m |
| UFR 25 | 103721 | 25mm Oval Conduit White | 150m |

CHANNELLING

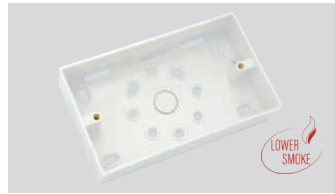


| Part No. | A-Code | Description | Pk Qty |
|----------|--------|--------------------------------------|--------|
| CHA 1 | 86076 | 12mm Channelling White (150m Bundle) | 150m |
| CHA 2 | 86077 | 25mm Channelling White (150m Bundle) | 150m |
| CHA 3 | 86078 | 38mm Channelling White (150m Bundle) | 150m |

SINGLE SURFACE BOX ROUND CORNERED



TWIN SURFACE BOX ROUND CORNERED



| Part No. | A-Code | Description | Pk Qty |
|----------|--------|--|--------|
| SFB 1 | 103220 | Single 32mm Surface Box Square Corner 1xMT K.O & 1x Conduit K.O | 10pcs |
| SFB 2 | 103222 | Twin 32mm Surface Box Square Corner 1xMT K.O & 1x Conduit K.O | 10pcs |
| SFB 1/44 | 103224 | Single 44mm Surface Box Square Corner 1xMT K.O & 1x Conduit K.O | 10pcs |
| SFB 2/44 | 103226 | Twin 44mm Surface Box Square Corner 1xMT K.O & 1x Conduit K.O | 10pcs |
| SFR 1 | 103221 | Single 32mm Surface Box Round Corner 1xMT K.O & 1x Conduit K.O | 10pcs |
| SFR2 | 103223 | Twin 32mm Surface Box Round Corner 1xMT K.O & 1x Conduit K.O | 10pcs |
| SFR1/44 | 103225 | Single 44mm Surface Box Round Corner 1xMT K.O & 1x Conduit K.O | 10pcs |
| SFR2/44 | 103227 | Twin 44mm Surface Box Round Corner 1xMT K.O & 1x Conduit K.O | 10pcs |

SINGLE SURFACE BOX

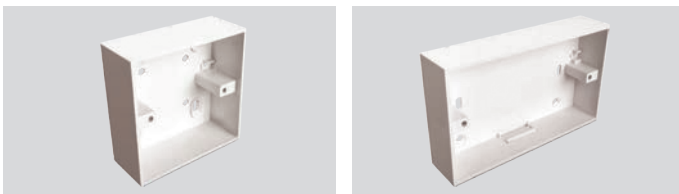


TWIN SURFACE BOX



| Part No. | A-Code | Description | Pk Qty |
|-----------------|--------|--|--------|
| MAK 85/85x25/3 | 41618 | Single 25mm Surface Box 3 Mini Trunking K.O | 1pc |
| MAK 85/85x25/4 | 41361 | Single 25mm Surface Box 4 Mini Trunking K.O | 1pc |
| MAK 85/150x32/1 | 41362 | Twin 32mm Surface Box 1 Mini Trunking K.O | 1pc |
| MAK 85/150x32/3 | 41353 | Twin 32mm Surface Box 3 Mini Trunking K.O | 1pc |

SURFACE BOXES



| Part No. | A-Code | Description | Pk Qty |
|---------------|--------|-----------------------------|--------|
| SHB 20/10 PWH | 101511 | Plain Sided Surface Box | 15pcs |
| SHB 20/20 PWH | 101512 | 1 x Conduit K.O Surface Box | 20pcs |
| SHB 20/1 WH | 25524 | 87x87x35 Surface Box | 15pcs |
| SHB 20/2 WH | 34347 | 87x147x32 Surface Box | 10pcs |

TRUNKING ADAPTER



| Part No. | A-Code | Description | Pk Qty |
|-----------|--------|------------------------|--------|
| SKE 16/16 | 4986 | 16x16 Trunking Adaptor | 1pc |
| SKE 16/25 | 4987 | 16x25 Trunking Adaptor | 1pc |

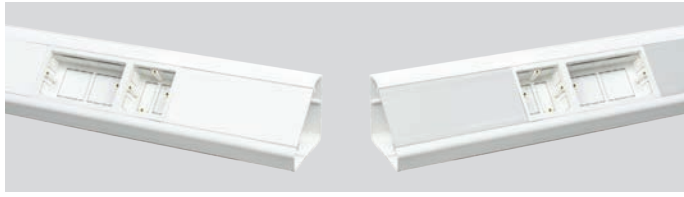
CEILING ROSE ADAPTOR



| Part No. | A-Code | Description | Pk Qty |
|----------|--------|--------------------------------|--------|
| CRA 1 | 57024 | Ceiling Rose Adaptor M4 thread | 20pcs |

PVC BENCH TRUNKING

BENCH TRUNKING



| Part No. | A-Code | Description | Pk Qty |
|----------|--------|--|--------|
| BT* | 104066 | 100mm x 100mm PVC Bench Trunking c/w White Lid - 3m Length | 3m |
| BT-LGL* | - | 100mm x 100mm PVC Bench Trunking c/w Light Grey Centre Lid - 3m Length | 3m |

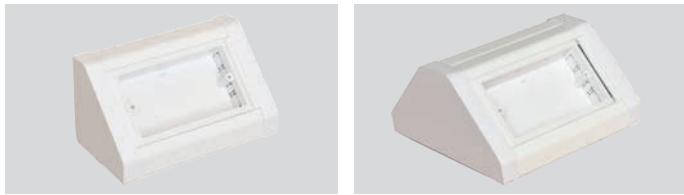
* Only available to use with SLB1-A and SLB2-A

1 GANG BENCH BOX SINGLE SIDED / DOUBLE SIDED



| Part No. | A-Code | Description | Pk Qty |
|----------|--------|-------------------------------|--------|
| BT-1G | 104071 | 1 Gang Bench Box | 1pc |
| BT-1GD | 104072 | 1 Gang Bench Box Double Sided | 1pc |

2 GANG BENCH BOX SINGLE SIDED / DOUBLE SIDED



| Part No. | A-Code | Description | Pk Qty |
|----------|--------|-------------------------------|--------|
| BT-2G | 104073 | 2 Gang Bench Box | 1pc |
| BT-2GD | 104074 | 2 Gang Bench Box Double Sided | 1pc |

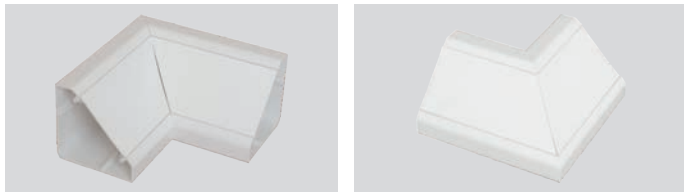
3 GANG BENCH BOX SINGLE SIDED / DOUBLE SIDED



| Part No. | A-Code | Description | Pk Qty |
|----------|--------|-------------------------------|--------|
| BT1+2G | 104075 | 3 Gang Bench Box | 1pc |
| BT1+2GD | 104076 | 3 Gang Bench Box Double Sided | 1pc |

INTERNAL ANGLE

EXTERNAL ANGLE



| Part No. | A-Code | Description | Pk Qty |
|----------|--------|----------------|--------|
| BT1-IB | 104077 | Internal Angle | 1pc |
| BT-EB | 104078 | External Angle | 1pc |

COUPLER



| Part No. | A-Code | Description | Pk Qty |
|----------|--------|-------------|--------|
| BT/BC | 104070 | Coupler | 1pc |

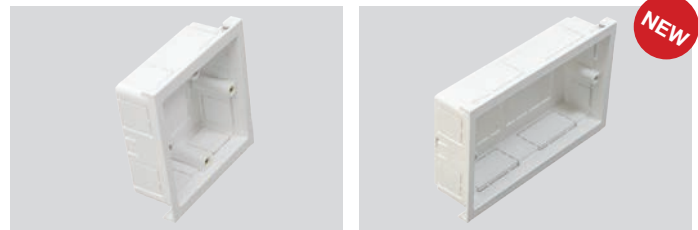
END CAP

DOUBLE END CAP



| Part No. | A-Code | Description | Pk Qty |
|----------|--------|----------------|--------|
| BT/BES | 104068 | End Cap | 1pc |
| BT/BED | 104069 | Double End Cap | 1pc |

ADJUSTABLE BACK BOXES 1G / 2G



| Part No. | A-Code | Description | Pk Qty |
|----------|--------|--------------------------------------|--------|
| SLB1-A | 104560 | Single Adjustable Back Box 30mm-50mm | 1pc |
| SLB2-A | 104561 | Twin Adjustable Back Box 30mm-50mm | 1pc |

DIVIDER



| Part No. | A-Code | Description | Pk Qty |
|----------|--------|-------------|--------|
| MTW 50 | 19717 | Divider | 3m |

Compatibility of new adjustable single and twin back boxes

Due to a redesign of Unvolt bench trunking will only accept SLB1-A and SLB2-A and will no longer accept SLB1 and SLB2.

PP2WT POWER POLE

NEW PP2WT Power Pole

NEW

| Part No. | A-Code | Description | Pk Qty |
|----------|--------|---|--------|
| PP2WT | 105886 | Power Pole 3.5m (Aluminum White) c/w 6x SLB1 | 1pc |

KEY DESIGN FEATURES

New telescopic adjustable arm fixing for fast installation.

PP2WT (powder coated white) - 3.5m long, extendible up to 3.95m

More modern design

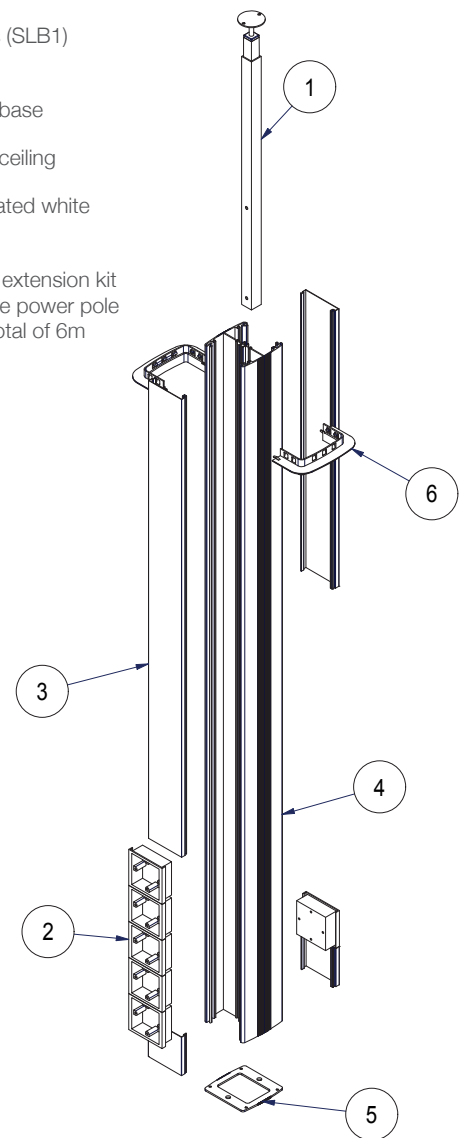
c/w 6 x 1 gang boxes (SLB1) including roof collar.

New design fixing for base

New design fixing for ceiling

Colours – Powder coated white (RAL9010).

Additional extra 2.5m extension kit (PP2EXT), enabling the power pole to be extended to a total of 6m



| Item | Description |
|------|---------------------------------|
| 1 | Adjustable Fixing Arm 100-400mm |
| 2 | Single Outlet Box |
| 3 | PVC Lid |
| 4 | Power Pole - 3.5M |
| 5 | Floor Fixing Plate |
| 6 | Ceiling Tile Collar |

PP1 POWER POST



PP1 Power Post

Components

- Double-sided aluminium spine
- Top cap
- 2 trunking lids (front and back)
- 3 outlet boxes SLB 1
- Base fixing kit (with screws)

Material

Aluminium and PVC-U

Dimensions

99x104x690mm

POWER POLE AND POST ACCESSORIES



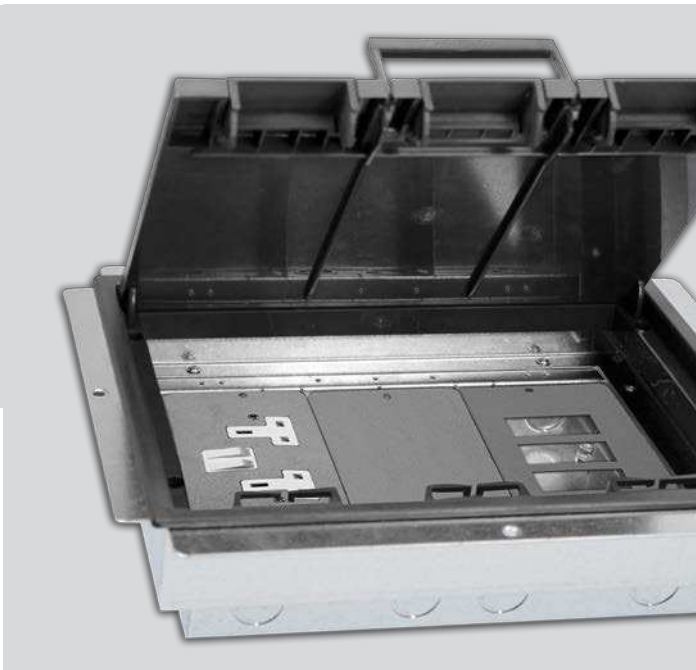
| Part No. | A-Code | Description | Pk Qty |
|----------|--------|-------------|--------|
| SLB 1 | 36075 | 1 Gang Box | 1pc |
| SLB 2 | 36076 | 2 Gang Box | 1pc |



| Part No. | A-Code | Description | Pk Qty |
|----------|--------|------------------|--------|
| SL 80 | 82106 | Spare Centre Lid | 1pc |
| MTW50 | 19717 | Divider | 1pc |

| Part No. | A-Code | Description | Pk Qty |
|----------|--------|------------------------|--------|
| PP1 W | 82244 | Power Post c/w 3 SLB 1 | 1pc |
| PP2 W | 82245 | Power Pole c/w 6 SLB 1 | 1pc |

CAVITY FLOOR BOXES

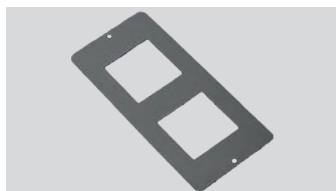


| Part No. | A-Code | Description | Pk Qty |
|-------------------------|--------|---|--------|
| UNIFFB 3L-90 | 96516 | 3 Comp Cavity Floor Box 305x220x90mm, c/w 1xTSS0, 1xBlank, 1xRJ45 | 1pc |
| UNIEFB 3L-90 | 96525 | 3 Comp Cavity Floor Box 305x220x90mm - Empty | 1pc |
| NEW UNIEFB 3L-75 | 105822 | 3 Comp Cavity Floor Box 305x220x75mm - Empty | 1pc |

BLANK PLATE



2 X EURO PLATE

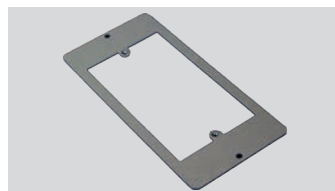


| Part No. | A-Code | Description | Pk Qty |
|----------|--------|--------------------------|--------|
| FOBP 300 | 96517 | Blank Plate | 1pc |
| FOBP 312 | 96524 | 2 x Euro Plate (50x50mm) | 1pc |

TWIN SWITCH SOCKET PLATE



TWIN SOCKET ACC PLATE

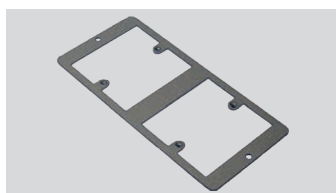


| Part No. | A-Code | Description | Pk Qty |
|----------|--------|-----------------------------|--------|
| FOBP 305 | 96523 | Twin Switch Socket Plate | 1pc |
| FOBP 303 | 96520 | Twin Socket Accessory Plate | 1pc |

ALPHA SNAP PLATE

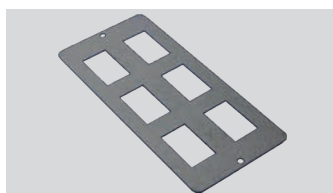


LJU 3/4/5

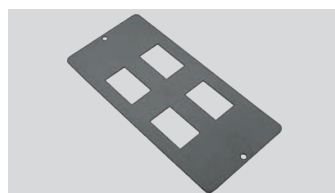


| Part No. | A-Code | Description | Pk Qty |
|----------|--------|--|--------|
| FOBP 309 | 96521 | 4 x Alpha Snap Plate (47x22mm cut out) | 1pc |
| FOBP 310 | 96519 | 2 x LJU3/4/5 for 86x86mm Accessory Plate | 1pc |

6 X LJ6C PLATE



4 X LJ6C PLATE



| Part No. | A-Code | Description | Pk Qty |
|----------|--------|----------------------------------|--------|
| FOBP 306 | 96522 | 6 x LJ6C Plate (37x22mm cut out) | 1pc |
| FOBP 307 | 96518 | 4 x LJ6C Plate (37x22mm cut out) | 1pc |

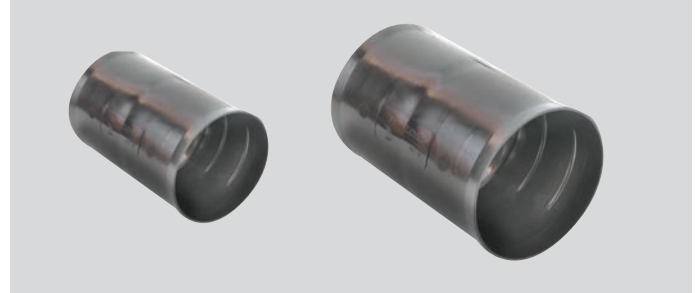
TWIN WALL DUCTING

DUCTING

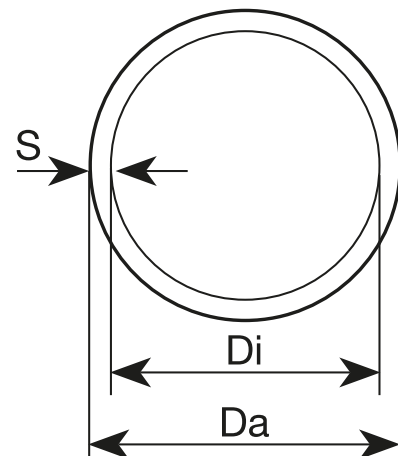


| Part No. | A-Code | Description | Pk Qty |
|-----------|-------------|-------------------------|--------|
| FXKVR 40 | 55107 | 40mm Twin Wall Ducting | 50m |
| FXKVR 50 | 41925/99018 | 50mm Twin Wall Ducting | 50m |
| FXKVR 63 | 32332 | 63mm Twin Wall Ducting | 50m |
| FXKVR 75 | 26353 | 75mm Twin Wall Ducting | 50m |
| FXKVR 90 | 41343 | 90mm Twin Wall Ducting | 50m |
| FXKVR 110 | 41344 | 110mm Twin Wall Ducting | 50m |

DUCTING COUPLER



| Part No. | A-Code | Description | Pk Qty |
|-----------|--------|-----------------------------------|--------|
| FXKVM 40 | 55202 | 40mm Underground Ducting Coupler | 1pc |
| FXKVM 50 | 25755 | 50mm Underground Ducting Coupler | 1pc |
| FXKVM 63 | 25756 | 63mm Underground Ducting Coupler | 1pc |
| FXKVM 75 | 25757 | 75mm Underground Ducting Coupler | 1pc |
| FXKVM 90 | 25758 | 90mm Underground Ducting Coupler | 1pc |
| FXKVM 110 | 103649 | 110mm Underground Ducting Coupler | 1pc |



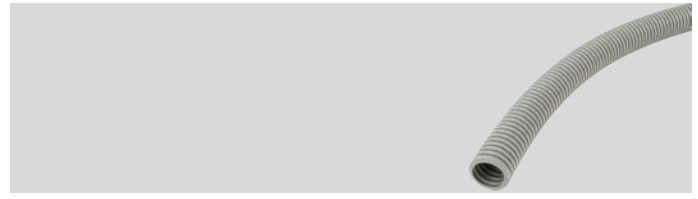
| Nominal Size | Outer Diameter Da | Tolerance | Inner Diameter Di (minimal) |
|--------------|-------------------|-----------|-----------------------------|
| 40 | 40.0 | +0.8/-0.0 | 32.0 |
| 50 | 50.0 | +1.0/-0.0 | 41.0 |
| 63 | 63.0 | +1.2/-0.0 | 52.0 |
| 75 | 75.0 | +1.4/-0.0 | 62.2 |
| 90 | 90.0 | +1.7/-0.0 | 74.0 |
| 110 | 110.0 | +2.0/-0.0 | 93.0 |

LIGHT GAUGE (320N) PVC-U



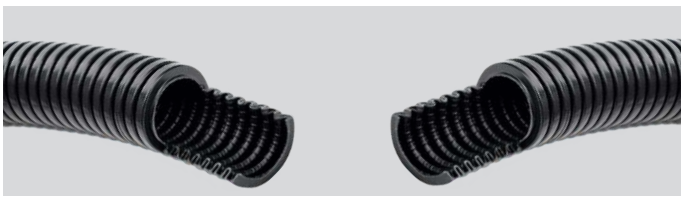
| Part No. | A-Code | Description | Pk Qty |
|----------|--------|-----------------------------|--------|
| FX 16 G | 19855 | 16mm Light Gauge Light Grey | 50m |
| FX 20 G | 19856 | 20mm Light Gauge Light Grey | 50m |
| FX 25 G | 19857 | 25mm Light Gauge Light Grey | 50m |
| FX 32 G | 19858 | 32mm Light Gauge Light Grey | 25m |
| FX 40 G | 19859 | 40mm Light Gauge Light Grey | 25m |

LIGHT GREY CONDUIT FLEXIBLE STABILISED SOLAR



| Part No. | A-Code | Description | Pk Qty |
|--------------|---------|--|--------|
| FXPS 20 G-UV | 2128682 | 20mm Light Grey Flexible Conduit UV Stabilised Solar | 50m |
| FXPS 25 G-UV | 2128683 | 25mm Light Grey Flexible Conduit UV Stabilised Solar | 50m |
| FXPS 32 G-UV | 2128684 | 32mm Light Grey Flexible Conduit UV Stabilised Solar | 25m |

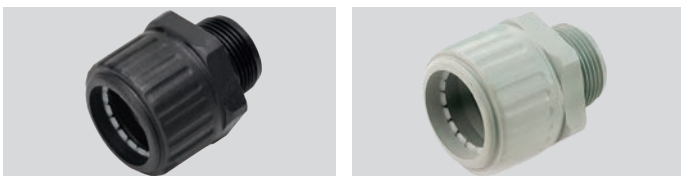
MEDIUM GAUGE TURBO (750N) PVC-U



| Part No. | A-Code | Description | Pk Qty |
|----------------|--------|-------------------------|--------|
| FXP-TURBO 16 B | 98772 | 16mm Medium Gauge Black | 50m |
| FXP-TURBO 20 B | 84057 | 20mm Medium Gauge Black | 50m |
| FXP-TURBO 25 B | 84058 | 25mm Medium Gauge Black | 50m |
| FXP-TURBO 32 B | 98773 | 32mm Medium Gauge Black | 25m |
| FXP-TURBO 40 B | 98774 | 40mm Medium Gauge Black | 25m |
| FXP-TURBO 50 B | 98775 | 50mm Medium Gauge Black | 25m |
| FXP-TURBO 63 B | 98776 | 63mm Medium Gauge Black | 25m |

Available in grey on request

FLEXIBLE CONDUIT FITTINGS



| Part No. | A-Code | Description | Pk Qty |
|-------------|--------|-------------------|--------|
| SGL 16/16 G | 12699 | Glands 16mm Grey | 100pcs |
| SGL 16/16 B | 27798 | Glands 16mm Black | 100pcs |
| SGL 20/20 G | 12700 | Glands 20mm Grey | 50pcs |
| SGL 20/20 B | 27799 | Glands 20mm Black | 50pcs |
| SGL 25/25 G | 12701 | Glands 25mm Grey | 50pcs |
| SGL 25/25 B | 27800 | Glands 25mm Black | 50pcs |
| SGL 32/32 G | 12702 | Glands 32mm Grey | 30pcs |
| SGL 32/32 B | 27801 | Glands 32mm Black | 30pcs |
| SGL 40/40 G | 15509 | Glands 40mm Grey | 20pcs |
| SGL 40/40 B | 27802 | Glands 40mm Black | 20pcs |
| SGL 50/50 G | 15508 | Glands 50mm Grey | 16pcs |
| SGL 50/50 B | 27803 | Glands 50mm Black | 16pcs |
| SGL 63/63 G | 43075 | Glands 63mm Grey | 6pcs |
| SGL 63/63 B | 27804 | Glands 63mm Black | 6pcs |

FLEXIBLE CONDUIT GRIP STYLE COUPLER



| Part No. | A-Code | Description | Pk Qty |
|----------|--------|--------------------------------------|--------|
| KM 20 LG | 83837 | Conduit Grip Coupler 20mm Light Grey | 100pcs |
| KM 20 BK | 84051 | Conduit Grip Coupler 20mm Black | 100pcs |
| KM 20 O | 80642 | Conduit Grip Coupler 20mm Orange | 100pcs |
| KM 25 LG | 83839 | Conduit Grip Coupler 25mm Light Grey | 50pcs |
| KM 25BK | 84052 | Conduit Grip Coupler 25mm Black | 50pcs |
| KM 25 O | 80643 | Conduit Grip Coupler 25mm Orange | 50pcs |
| KM 32 LG | 85924 | Conduit Grip Coupler 32mm Light Grey | 25pcs |
| KM 32 BK | 85926 | Conduit Grip Coupler 32mm Black | 25pcs |
| KM 32 O | 85925 | Conduit Grip Coupler 32mm Orange | 25pcs |

FLEXIBLE CONDUIT CLIPS



| Part No. | A-Code | Description | Pk Qty |
|----------|--------|-----------------------|--------|
| CL 20 BK | 82179 | 20mm Clips Black | 100pcs |
| CL 20 LG | 82178 | 20mm Clips Light Grey | 100pcs |
| CL 25 BK | 82216 | 25mm Clips Black | 100pcs |
| CL 25 LG | 82215 | 25mm Clips Light Grey | 100pcs |
| CL 32 LG | 82219 | 32mm Clips Light Grey | 50pcs |
| CL 32 BK | 82220 | 32mm Clips Black | 50pcs |

10 Year Product Warranty

Dietzel-Univolt warrants that FXPS-UV conduit will not suffer from significant mechanical deterioration from ultra violet light exposure for a period of up to 10 years from the purchase date of the product, where significant degradation of the conduits mechanical properties has been caused by ultra violet radiation Dietzel-Univolt will replace the conduit free of charge, the owner of the solar facility must be able to prove the conduit was installed correctly and regularly inspected and maintained.

Warranty Exclusions

Dietzel-Univolt does not cover deterioration of flexible conduit due to any of the following circumstances:- Incorrect conduit selected for application and environment. - Incorrect installation of flexible conduit. - Failure to follow Dietzel-Univolt's selection and installation guidance. - Flexible conduit damage or deterioration other than by UV radiation.

Limited Liability: Dietzel-Univolt's liability is strictly limited to the supply of replacement conduit only.

For more detailed information concerning our products including technical data and standards we kindly ask you to contact our Export Department.

Any reproduction of this catalogue, partly or in whole, is only permitted with the written consent of Dietzel GmbH. Errors and omissions excepted.

FLEXIBLE CONDUIT CONTRACTOR PACKS / ENCLOSURE BOXES

CONTRACTOR PACKS



| Part No. | A-Code | Description | Pk Qty |
|----------------|--------|--|--------|
| CFX20B | 100070 | 20mm Black Pack c/w 10 glands | 1pc |
| CFX25B | 100071 | 25mm Black Pack c/w 10 Glands | 1pc |
| UNICON20W | 98319 | 20mm White Contractor Pack c/w 10 Glands | 1pc |
| UNICON25W | 98320 | 25mm White Contractor Pack c/w 10 Glands | 1pc |
| UNICON20-IP68B | 98321 | 20mm Contractor Pack - IP68 Rated c/w 10 Glands Black | 1pc |
| UNICON25-IP68B | 98322 | 25mm Contractor Pack - IP68 Rated c/w 10 Glands Black | 1pc |

ENCLOSURES, KNOCKOUT BOXES WHITE / BLACK



| Part No. | A-Code | Description | Pk Qty |
|----------|--------|---|--------|
| PKG100 W | 16402 | Enclosure Box 105x105x64 with knockouts 20mm & 25mm White | 5pcs |
| PKG100B | 16404 | Enclosure Box 105x105x64 with knockouts 20mm & 25mm Black | 5pcs |
| PKG200W | 12344 | Enclosure Box 200x150x85 with knockouts 20mm to 32mm White | 2pcs |
| PKG200B | 10789 | Enclosure Box 200x150x85 with knockouts 20mm to 32mm Black | 2pcs |

ENCLOSURES, PLAIN SIDED WHITE / BLACK



| Part No. | A-Code | Description | Pk Qty |
|-----------|--------|---|--------|
| PKG100OPW | 850 | Enclosure Box 105x105x64 Plain Sides White | 5pcs |
| PKG100OPB | 848 | Enclosure Box 105x105x64 Plain Sides Black | 5pcs |
| PKG200OPW | 11629 | Enclosure Box 200x150x85 Plain Sides White | 2pcs |
| PKG200OPB | 10790 | Enclosure Box 200x150x85 Plain Sides Black | 2pcs |
| PKG300OPW | 13006 | Enclosure Box 300x200x125 Plain Sides & Hinged Lid White | 1pcs |
| PKG300OPB | 13010 | Enclosure Box 300x200x125 Plain Sides & Hinged Lid Black | 1pcs |

The Professional. With glide core. Halogen-free.



HFX **Xtreme**

BENDING SPRINGS



| Part No. | A-Code | Description | Pk Qty |
|-----------|--------|---|--------|
| BSL 20 | 9135 | 20mm Bending Spring L/G | 1pc |
| BS 20 SE | 84065 | 20mm Bending for use with L/G Conduit LSF0H | 1pc |
| BS 20-LSF | 8912 | 20mm Bending Spring H/G LSF | 1pc |
| BSL 25 | 9136 | 25mm Bending Spring L/G | 1pc |
| BS 25 SE | 84066 | 25mm Bending for use with L/G Conduit LSF0H | 1pc |
| BS25-LSF | 8913 | 25mm Bending Spring H/G LSF | 1pc |

DRAW TAPE



| Part No. | A-Code | Description | Pk Qty |
|----------|--------|---------------------|--------|
| UNIDT 10 | 85861 | 10m Nylon Draw Tape | 1pc |
| UNIDT 20 | 85862 | 20m Nylon Draw Tape | 1pc |
| UNIDT 30 | 85863 | 30m Nylon Draw Tape | 1pc |

CUTTING TOOL



| Part No. | A-Code | Description | Pk Qty |
|----------|--------|---|--------|
| USZ-S | 15008 | Cutting Tool for Conduits up to 32mm and Trunking up to 25x40 | 1pc |

CONDUIT BENDING BLOCK



| Part No. | A-Code | Description | Pk Qty |
|----------|--------|-----------------------|--------|
| GP 23-36 | 938 | Conduit Bending Block | 1pc |

SEALING CEMENT



| Part No. | A-Code | Description | Pk Qty |
|-----------|--------|----------------------|--------|
| VKS 250/1 | 87261 | 250ml Sealing Cement | 1pc |

IP68 DOME TOP CABLE GLANDS

6MM TO 18MM CABLE GLANDS, BLACK, WHITE



| Part No. | A-Code | Description | Pk Qty |
|------------|--------|---|--------|
| UNIGM 20 B | 85855 | 6mm - 12mm Cable Gland - Black c/w Locknut | 100pcs |
| UNIGM 20 W | 85857 | 6mm - 12mm Cable Gland - White c/w Locknut | 100pcs |
| UNIGM 25 B | 85858 | 13mm - 18mm Cable Gland - Black c/w Locknut | 100pcs |
| UNIGM 25 W | 85860 | 13mm - 18mm Cable Gland - White c/w Locknut | 100pcs |

WALL PLUG



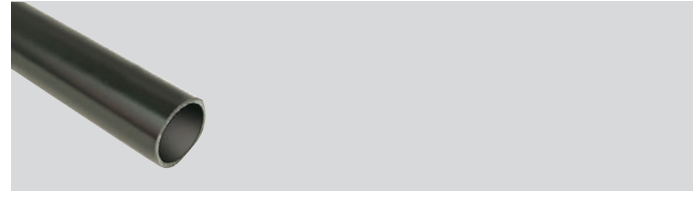
| Part No. | A-Code | Description | Pk Qty |
|----------|--------|-------------|--------|
| DSD35 | 8226 | Wall Plug | 1pc |

RIGID CONDUIT LIGHT LSF0H EN-61386-21



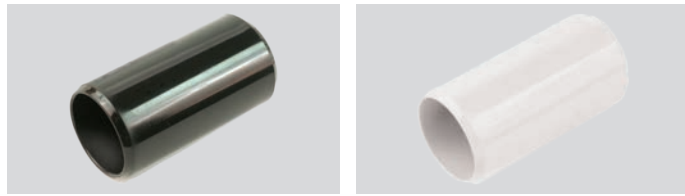
| Part No. | A-Code | Description | Pk Qty |
|---------------|--------|-------------------------------------|--------|
| HFIR 20 White | 87179 | HFT Rigid Conduit, Light Gauge 20mm | 102m |
| HFIR 25 White | 87180 | HFT Rigid Conduit, Light Gauge 25mm | 60m |
| HFIR 32 White | 87181 | HFT Rigid Conduit, Light Gauge 32mm | 45m |

RIGID CONDUIT HEAVY LSF0H EN-61386-21



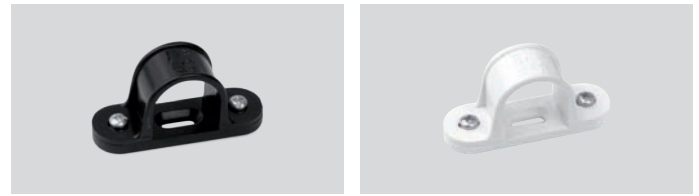
| Part No. | A-Code | Description | Pk Qty |
|---------------|--------|------------------------------------|--------|
| HFBS 20 Black | 64967 | HFT Rigid Conduit Heavy Gauge 20mm | 111m |
| HFBS 25 Black | 64968 | HFT Rigid Conduit Heavy Gauge 25mm | 57m |

SLIP TYPE COUPLERS



| Part No. | A-Code | Description | Pk Qty |
|---------------|--------|------------------------------|--------|
| HFSM 20 White | 37036 | Slip Type Coupler 20mm White | 100pcs |
| HFSM 20 Black | 20557 | Slip Type Coupler 20mm Black | 100pcs |
| HFSM 25 White | 38572 | Slip Type Coupler 25mm White | 50pcs |
| HFSM 25 Black | 20558 | Slip Type Coupler 25mm Black | 50pcs |
| HFSM 32 White | 38573 | Slip Type Coupler 32mm White | 25pcs |

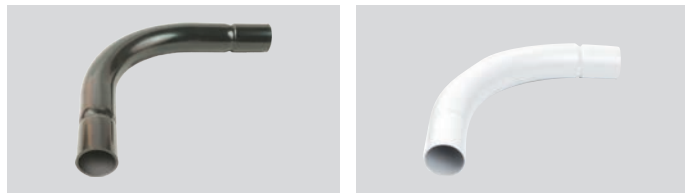
SPACER BAR SADDLES BLACK SPACER BAR SADDLES WHITE



| Part No. | A-Code | Description | Pk Qty |
|----------------|--------|------------------------------|--------|
| HFSBS 20 White | 37033 | Spacer Bar Saddle 20mm White | 50pcs |
| HFSBS 20 Black | 9629 | Spacer Bar Saddle 20mm Black | 50pcs |
| HFSBS 25 White | 41621 | Spacer Bar Saddle 25mm White | 50pcs |
| HFSBS 25 Black | 9630 | Spacer Bar Saddle 25mm Black | 50pcs |
| HFSBS 32 White | 41853 | Spacer Bar Saddle 32mm White | 50pcs |

NORMAL BEND BLACK

NORMAL BEND WHITE



| Part No. | A-Code | Description | Pk Qty |
|---------------|--------|--|--------|
| HFSB 20 White | 38577 | Normal Bend, Slip Type 90 Degree, 20mm White | 25pcs |
| HFSB 20 Black | 20826 | Normal Bend, Slip Type 90 Degree, 20mm Black | 25pcs |
| HFSB 25 White | 38578 | Normal Bend, Slip Type 90 Degree, 25mm White | 20pcs |
| HFSB 25 Black | 20827 | Normal Bend, Slip Type 90 Degree; 25mm Black | 20pcs |
| HFSB 32 White | 38579 | Normal Bend, Slip Type 90 Degree, 32mm White | 1pc |

INSPECTION BEND BLACK

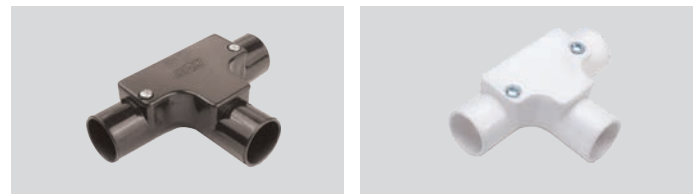
INSPECTION BEND WHITE



| Part No. | A-Code | Description | Pk Qty |
|---------------|--------|----------------------------|--------|
| HFIB 20 White | 37127 | Inspection Bend 20mm White | 50pcs |
| HFIB 20 Black | 9643 | Inspection Bend 20mm Black | 50pcs |
| HFIB 25 White | 86344 | Inspection Bend 25mm White | 20pcs |
| HFIB 25 Black | 9644 | Inspection Bend 25mm Black | 20pcs |

INSPECTION TEE BLACK

INSPECTION TEE WHITE



| Part No. | A-Code | Description | Pk Qty |
|---------------|--------|---------------------------|--------|
| HFIT 20 White | 37133 | Inspection Tee 20mm White | 50pcs |
| HFIT 20 Black | 9640 | Inspection Tee 20mm Black | 50pcs |
| HFIT 25 Black | 9641 | Inspection Tee 25mm Black | 20pcs |



FEMALE ADAPTORS BLACK



FEMALE ADAPTORS WHITE



| Part No. | A-Code | Description | Pk Qty |
|--------------------|--------|---------------------------|--------|
| HFAFT/MBS 20 White | 37043 | Female Adaptor 20mm White | 100pcs |
| HFAFT/MBS 20 Black | 9674 | Female Adaptor 20mm Black | 100pcs |
| HFAFT/MBS 25 White | 41465 | Female Adaptor 25mm White | 50pcs |
| HFAFT/MBS 25 Black | 9675 | Female Adaptor 25mm Black | 50pcs |
| HFAFT/MBS 32 White | 64271 | Female Adaptor 32mm White | 20pcs |

MALE ADAPTORS BLACK



MALE ADAPTORS WHITE



| Part No. | A-Code | Description | Pk Qty |
|-------------------|--------|-------------------------|--------|
| HFAMT/LR 20 White | 40363 | Male Adaptor 20mm White | 100pcs |
| HFAMT/LR 20 Black | 9680 | Male Adaptor 20mm Black | 100pcs |

CONDUIT CLIP WHITE AND BLACK



| Part No. | A-Code | Description | Pk Qty |
|---------------|--------|-------------------------|--------|
| HFCL 20 White | 37041 | Conduit Clip 20mm White | 100pcs |
| HFCL 20 Black | 9635 | Conduit Clip 20mm Black | 100pcs |
| HFCL 25 White | 38597 | Conduit Clip 25mm White | 100pcs |
| HFCL 25 Black | 9636 | Conduit Clip 25mm Black | 100pcs |
| HFCL 32 White | 38598 | Conduit Clip 32mm White | 100pcs |

CIRCULAR LIDS BLACK



CIRCULAR LIDS WHITE



| Part No. | A-Code | Description | Pk Qty |
|----------------|--------|-----------------------------|--------|
| HFCBL 16-25 BK | 9665 | 16-25mm Circular Lids Black | 100pcs |
| HFCBL 16-25 WH | 37142 | 16-25mm Circular Lids White | 100pcs |
| HFCBL 32 WH | 86343 | 32mm Circular Lids White | 100pcs |

For HFT adhesive please contact the Univolt sales office

CONDUIT BOXES

TERMINAL BOXES WHITE AND BLACK



| Part No. | A-Code | Description | Pk Qty |
|------------|--------|-------------------------|--------|
| HFCB 20/1W | 37038 | Terminal Box 20mm White | 25pcs |
| HFCB 20/1B | 9646 | Terminal Box 20mm Black | 25pcs |
| HFCB 25/1W | 41622 | Terminal Box 25mm White | 25pcs |
| HFCB 25/1B | 9647 | Terminal Box 25mm Black | 25pcs |
| HFCB 32/1W | 86336 | Terminal Box 32mm White | 10pcs |

THROUGH BOXES WHITE AND BLACK



| Part No. | A-Code | Description | Pk Qty |
|------------|--------|------------------------|--------|
| HFCB 20/2W | 37039 | Through Box 20mm White | 25pcs |
| HFCB 20/2B | 9650 | Through Box 20mm Black | 25pcs |
| HFCB 25/2W | 41459 | Through Box 25mm White | 25pcs |
| HFCB 25/2B | 9651 | Through Box 25mm Black | 25pcs |
| HFCB 32/2W | 86337 | Through Box 32mm White | 10pcs |

ANGLE BOXES WHITE AND BLACK



| Part No. | A-Code | Description | Pk Qty |
|-------------|--------|----------------------|--------|
| HFCB 20/A W | 37136 | Angle Box 20mm White | 25pcs |
| HFCB 20/A B | 9654 | Angle Box 20mm Black | 25pcs |
| HFCB 25/A W | 41461 | Angle Box 25mm White | 25pcs |
| HFCB 25/A B | 9655 | Angle Box 25mm Black | 25pcs |
| HFCB 32/A W | 86406 | Angle Box 32mm White | 10pcs |

TEE BOXES WHITE AND BLACK



| Part No. | A-Code | Description | Pk Qty |
|-------------|--------|--------------------|--------|
| HFCB 20/3 W | 37040 | Tee Box 20mm White | 25pcs |
| HFCB 20/3 B | 9658 | Tee Box 20mm Black | 25pcs |
| HFCB 25/3 W | 41460 | Tee Box 25mm White | 20pcs |
| HFCB 25/3 B | 9659 | Tee Box 25mm Black | 20pcs |

HFT PLIABLE CONDUIT - PC

PLIABLE CONDUIT



| Part No. | A-Code | Description | Pk Qty |
|------------------|--------|---|--------|
| HFXP-HT 20 Black | 11302 | HFT Chlorine Free Pliable Conduit Medium Gauge 20mm | 50m |
| HFXP-HT 25 Black | 11303 | HFT Chlorine Free Pliable Conduit Medium Gauge 25mm | 50m |

STRAIGHT GLANDS



| Part No. | A-Code | Description | Pk Qty |
|-----------------|--------|-------------------------------|--------|
| HGL 20/20 Black | 11790 | HFT 20mm Straight Gland Black | 50pcs |
| HGL 20/20 Grey | 57259 | HFT 20mm Straight Gland Grey | 50pcs |
| HGL 25/25 Black | 12609 | HFT 25mm Straight Gland Black | 50pcs |
| HGL 25/25 Grey | 57260 | HFT 25mm Straight Gland Grey | 50pcs |

HFT ENCLOSURE BOXES

ENCLOSURE BOXES



| Part No. | A-Code | Description | Pk Qty |
|---------------------|--------|--|--------|
| PKG 100 OP Grey | 23760 | 105x105x66mm with knock-outs | 5pcs |
| PKG 100 OP Black | 528 | 105x105x66mm with knock-outs | 5pcs |
| PKG 100 OP T Black | 27264 | 105x105x66mm with knock-outs - Transparent Lid | 5pcs |
| PKG 100 OP White | 37325 | 105x105x66mm with knock-outs | 5pcs |
| PKG 200 OP Grey | 23761 | 200x150x85mm with knock-outs | 2pcs |
| PKG 200 OP Black | 10685 | 200x150x85mm with knock-outs | 2pcs |
| PKG 200 OP T Black | 18645 | 200x150x85mm with knock-outs - Transparent Lid | 2pcs |
| PKG 200 OP T White | 42558 | 200x150x85mm with knock-outs - Transparent Lid | 2pcs |
| PKG 200 OP White | 37326 | 200x150x88 with knock-outs | 2pcs |
| PKG 300 OP H Black | 27682 | 300x200x125mm with knock-outs - Raised Lid | 1pc |
| PKG 300 OP Grey | 23762 | 300x200x125mm with knock-outs | 1pc |
| PKG 300 OP Black | 13019 | 300x200x125mm with knock-outs | 1pc |
| PKG 300 OP T Grey | 33582 | 300x200x125mm with knock-outs - Transparent Lid | 1pc |
| PKG 300 OP T Black | 13022 | 300x200x125mm with knock-outs - Transparent Lid | 1pc |
| PKG 300 OP T White | 42555 | 300x200x125mm with knock-outs - Transparent Lid | 1pc |
| PKG 300 OP TH Grey | 80877 | 300x200x125mm with knock-outs - Transparent Raised Lid | 1pc |
| PKG 300 OP TH Black | 22883 | 300x200x125mm with knock-outs - Transparent Raised Lid | 1pc |
| PKG 300 OP White | 65716 | 300x200x125mm with knock-outs - Raised Lid | 1pc |



The Lightest. With glide core. Halogen-free.

HFT MEDIUM GAUGE SELF RECOVERING (750N) BLACK
- PP BLEND



| Part No. | A-Code | Description | Pk Qty |
|---------------------|--------|---|--------|
| HFXP-TURBO PRO 16 B | 87169 | 16mm HFT Medium Gauge Self Recovering Black | 50m |
| HFXP-TURBO PRO 20 B | 87170 | 20mm HFT Medium Gauge Self Recovering Black | 50m |
| HFXP-TURBO PRO 25 B | 87171 | 25mm HFT Medium Gauge Self Recovering Black | 50m |
| HFXP-TURBO PRO 32 B | 87172 | 32mm HFT Medium Gauge Self Recovering Black | 25m |
| HFXP-TURBO PRO 40 B | 87173 | 40mm HFT Medium Gauge Self Recovering Black | 25m |
| HFXP-TURBO PRO 50 B | 87174 | 50mm HFT Medium Gauge Self Recovering Black | 25m |

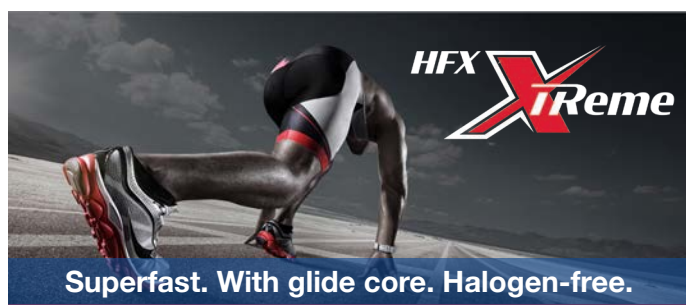
HFT MEDIUM GAUGE (750N) BLACK - PC



| Part No. | A-Code | Description | Pk Qty |
|---------------|--------|-----------------------------|--------|
| HFXP- HT 12 B | 16574 | 12mm HFT Medium Gauge Black | 50m |
| HFXP- HT 16 B | 11301 | 16mm HFT Medium Gauge Black | 50m |
| HFXP- HT 20 B | 11302 | 20mm HFT Medium Gauge Black | 50m |
| HFXP- HT 25 B | 11303 | 25mm HFT Medium Gauge Black | 50m |
| HFXP- HT 32 B | 11304 | 32mm HFT Medium Gauge Black | 25m |
| HFXP- HT 40 B | 13254 | 40mm HFT Medium Gauge Black | 25m |
| HFXP- HT 50 B | 13255 | 50mm HFT Medium Gauge Black | 25m |
| HFXP- HT 63 B | 19897 | 63mm HFT Medium Gauge Black | 25m |

HFT Conduit Material Key

| | |
|------------|--------------------|
| PVC | Polyvinyl Chloride |
| PP | polypropylene |
| PC | Polycarbonate |
| PA | Polyamide |
| PE | Polyethylene |



HFT LIGHT GAUGE (320N) BLACK - PA



| Part No. | A-Code | Description | Pk Qty |
|-----------|--------|----------------------------|--------|
| HFXS 12 B | 23654 | 12mm HFT Light Gauge Black | 50m |
| HFXS 16 B | 23655 | 16mm HFT Light Gauge Black | 50m |
| HFXS 20 B | 23656 | 20mm HFT Light Gauge Black | 50m |
| HFXS 25 B | 23657 | 25mm HFT Light Gauge Black | 50m |
| HFXS 32 B | 23658 | 32mm HFT Light Gauge Black | 25m |
| HFXS 40 B | 23659 | 40mm HFT Light Gauge Black | 25m |
| HFXS 50 B | 23660 | 50mm HFT Light Gauge Black | 25m |
| HFXS 63 B | 23661 | 63mm HFT Light Gauge Black | 25m |

HFT LIGHT GAUGE (320N) GREY - PA



| Part No. | A-Code | Description | Pk Qty |
|-----------|--------|---------------------------|--------|
| HFXS 12 G | 15902 | 12mm HFT Light Gauge Grey | 50m |
| HFXS 16 G | 12903 | 16mm HFT Light Gauge Grey | 50m |
| HFXS 20 G | 12904 | 20mm HFT Light Gauge Grey | 50m |
| HFXS 25 G | 12905 | 25mm HFT Light Gauge Grey | 50m |
| HFXS 32 G | 12906 | 32mm HFT Light Gauge Grey | 25m |
| HFXS 40 G | 12907 | 40mm HFT Light Gauge Grey | 25m |
| HFXS 50 G | 12908 | 50mm HFT Light Gauge Grey | 25m |
| HFXS 63 G | 25054 | 63mm HFT Light Gauge Grey | 25m |

HFT LIGHT GAUGE (320N) ORANGE - PE



| Part No. | A-Code | Description | Pk Qty |
|-----------|--------|-----------------------------|--------|
| FXPY 16 O | 65098 | 16mm HFT Light Gauge Orange | 100m |
| FXPY 20 O | 65099 | 20mm HFT Light Gauge Orange | 100m |
| FXPY 25 O | 65100 | 25mm HFT Light Gauge Orange | 50m |
| FXPY 32 O | 65101 | 32mm HFT Light Gauge Orange | 50m |



SAFETY FIRST FOR CONTRACTORS AT NEW HOSPITAL DEVELOPMENT

PROJECT: HEATHERWOOD
PRODUCT: PVC CONDUIT
SECTOR: MEDICAL

Contractor, White Horse Electrical, has installed a full range of cable containment solutions from Dietzel Univolt.

Large quantities of Univolt's PVC LSF as well as new wire basket cable containment has been installed throughout the vast site.

Contractor, White Horse Electrical, has opted for a full range of cable containment solutions from Dietzel Univolt, including PVC conduit and conduit accessories in an LSF specification as part of the firm M&E works at Heatherwood Hospital in Ascot.

The new £98m Heatherwood Hospital is set to replace the 100-year-old existing facility and is due for completion by 2021.

The team at White Horse Electrical has worked closely with Univolt's Steve Davis during the specification phase to identify the safest and most robust products available, presenting the firm's unique solution to the main contractor and end user.



CABLE CONTAINMENT FOR £11M DEVELOPMENT AT HMS CAMBRIA

PROJECT: HMS CAMBRIA CLIENT: BLUES ELECTRICAL
PRODUCT: UPVC LSF CONDUIT AND ACCESSORIES AND WIRE BASKET

Contractor, White Horse Electrical, has installed a full range of cable containment solutions from Dietzel Univolt.

Large quantities of Univolt's PVC LSF as well as new wire basket cable containment has been installed throughout the vast site. The new HMS Cambria building in Cardiff Bay will deliver state-of-the-art training and education facilities as well as accommodation and office suites alongside social and fitness areas for use by the Royal Naval Reserve, Royal Marines Reserve and University Royal Naval Units.

Blues Electrical will carry out a full Electrical installation at the site which is being managed by main contractor Morgan Sindall. The firm has opted for the Univolt conduit with an LSF (Low Smoke Flame Retardancy) specification, as well as a range of accessories and our latest product offering, the quick fix wire basket.



UNIVOLT GOES LARGE WITH WEMBLEY SPECIFICATION

PROJECT: WEMBLEY
PRODUCT: MAXI TRUNKING
SECTOR: RESIDENTIAL

Contractor, White Horse Electrical, has installed a full range of cable containment solutions from Dietzel Univolt.

Roc Electrical has installed 500 lengths of Univolt's 150 x 100 maxi trunking.

EO5 forms part of the transformational 85-acre Wembley project.

Univolt products are installed throughout all apartments.

Contractor, Roc Electrical, has specified Univolt's maxi-trunking as part of the firm's M&E works on the latest phase of Quintain's Wembley Park development 'EO5'.

Forming part of the development's 85-acre project which sees the transformation of an abandoned industrial area into a public facing mixed use space, EO5 includes the construction of three tower block's ranging between 10 and 21 storey's high and encompassing 458 apartments.

Roc Electrical will be delivering much of the mechanical and electrical installation, using in excess of 500 lengths of Univolt's 150 x 100 maxi trunking. The products will be installed in all apartments supporting the feed to the consumer unit and data cabinet via the riser cupboards.



UNIVOLT BASKET FOR GREATER BRIGHTON METROPOLITAN COLLEGE

PROJECT: GREATER BRIGHTON METROPOLITAN COLLEGE
CLIENT: MITIE ENGINEERING
PRODUCT: WIRE BASKET

Large quantities of Univolt's wire basket has been specified by contractor Mitie Engineering, as part of a £21million extension at Greater Brighton Metropolitan College.

The move by the college aims to equip students from Brighton with vital digital and creative skills and will be used to house its new Centre for Creative and Digital Industries.

Mitie Engineering is delivering all mechanical and electrical works and has chosen Univolt's quality wire basket via independent wholesaler, Quantum.

Univolt's wire basket is increasingly being recognised as the go to cable containment of choice for specifiers within the education sector and this makes the latest in a spate of projects secured for the specialist manufacturing firm.

BESPOKE POWER POLE SPECIFIED FOR IMPERIAL COLLEGE LONDON

PROJECT: IMPERIAL COLLEGE LONDON
PRODUCT: POWER POLE

Specialist cable containment manufacturer, Univolt UK, has seen its power pole in a bespoke variation, specified by contractors on site at Imperial College London's latest campus development.

A total of 72 power poles will be fitted across the new building in the unique specification. With the standard square power pole typically measuring 100 x 100, this Univolt product has been designed with a specific RAL colour, in a round surface pole and hexagonal base, with the added feature of a telescopic arm adjusting from 100mm to 400mm for ease of installation and flexibility above the ceiling soffit.

Photo by
Herry Lawford

"The customer wanted to include 10 single power and data sockets to be fitted under desk height, which couldn't be achieved with a standard power pole. We proposed the use of a mosaic socket which allowed us to condense all sockets down into the required area, achieving the clients aspirations.

"We're keen to ensure we meet all of our clients' needs in all areas of our operation and are seeing a rising demand for bespoke specifications, as was the case here.

"Education and student accommodation are important sectors for our business and our brand is becoming increasingly synonymous with this area of construction. Imperial College London is one of the UK's top ten universities and owns and manages some of the capitals most prestigious buildings. It's great to be part of their latest portfolio development scheme."

STEVE DAVIS,
NATIONAL BUSINESS DEVELOPMENT
MANAGER, DIETZEL-UNIVOLT

UNIVOLT'S SLR TRUNKING FOR MAIDSTONE INNOVATION CENTRE

PROJECT: WORKING ENVIRONMENTAL
PRODUCT: SLR TRUNKING

Electrical contractors delivering a full M&E package at Maidstone Innovation Centre have opted for Univolt's SLR trunking with a light grey lid.

Working Environmental is working as part of the Rydon Construction supply chain and is installing Univolt's SLR trunking solution throughout.

The new 30,000sq ft office facility is due for completion this summer and has been designed to create space for SMEs in the life science, healthcare and med-tech sectors. The project has been driven by the local council who are keen to encourage more people to start their med-tech businesses in Maidstone, considered the business capital of Kent.

The site is located within the Kent Medical Campus, just off Junction 7 of the M20. Maidstone Borough Council is reinvesting over £5.2m in recovered business rates from the enterprise zone into the building.

"Our SLR product is perfect for this type of modern, clean environment with its bright white aesthetic and curved profile, achieving DDA compliance through the addition of a light grey lid.

"We've worked closely with the team at Working Environmental to ensure that they make the perfect specification for this great project."

STEVE DAVIS,
NATIONAL BUSINESS DEVELOPMENT
MANAGER, DIETZEL-UNIVOLT

