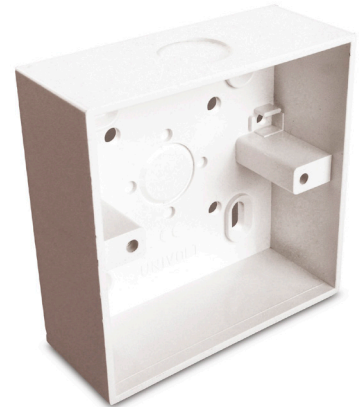


Data sheet

Part No.	SHB
Description	distribution and outlet box mounting screw spacing 60 mm, lugs with brass inserts, knock-outs for 1 conduit and 1 trunking, available with conduit entries 12x20 mm
Colour	white, similar to RAL 9010



Standard: EN60670, BS 4662



Working temperature
-5 to +60 °C

Art. no.	Dimensions Ø/LxW x D	For tube diameter	ps	pl
025 524	85 x 85 x 35 mm	20 mm	15 pc	120 pc
034 347	147 x 85 x 32 mm	20 mm	10 pc	80 pc

Further technical details

Details	
Halogen free	False
Number of inlets	1
Type of housing feed-through	Preembossing
Equipped with	None
Explosion-tested version	False
Material	PVC-U